



Specification of
DERRICK LAY BARGE
REGINA 250



Valentine Maritime (Gulf) LLC

Rev. : 17

Date : 09.07.12

SPECIFICATIONS ARE SUBJECT TO CHANGE WITHOUT PRIOR NOTICE OR LIABILITY

Y:\Regina250\Specification\R250 - Specification Rev17.doc

Page 1 of 11



DERRICK LAY BARGE
REGINA 250

1. **NAME OF VESSEL** : REGINA 250
2. **OWNERS** : Valentine Maritime (Gulf) L.L.C.
3. **YEAR BUILT** : 1978, Re-built-1982 (Extended and Derrick Crane installed).
4. **BUILDERS** : Chantiers De La Garonne, Bordeaux, France
5. **FLAG** : United Arab Emirates
6. **PORT OF REGISTRY** : Abu Dhabi
7. **GT** : 5,316
8. **NT** : 1,595
9. **DECK STRENGTH** : 18 MT / M²
10. **DEADWEIGHT / DISPLACEMENT**
 - Light Ship Weight : 4,868.91 MT
 - Deadweight : 3,331.02 MT
 - Displacement : 8,199.93 MT
11. **HULL**
 - a. Type of Vessel : Derrick Pipelay / Construction / Accommodation Barge.

Box type floating Pontoon, made of steel, all steel welded construction, with wooden deck & pipelay ramp.
 - b. Classification : Bureau Veritas & IRS (Dual Classed), Hull, Mach, Pontoon / NP, Unrestricted Navigation.
 - c. Dimensions : Length O.A. 94.00 mtr (308.40 feet)
Length 90.24 mtr (296.06 feet)
Breadth 26.00 mtr (85.30 feet)
Depth 6.75 mtr (22.14 feet)
Draft 3.47 mtr (11.38 feet)
Air Draft 39.00 mtr (127.95 feet)
 - d. Fenders : Pipe fenders with heavy duty rubber tyres at regular intervals.
 - e. Mooring / Towing Fittings : Equipped with necessary Bollards Bits, Fair leads, Main & Emergency Tow Bridles.



12. CRANES

a) **Derrick Crane**

- 1 No. x 250 MT Fully revolving, pedestal mounted CLYDE Crane
Model : 37-DE -190+20+15

Capacities:

- Main Hook : 250 MT @ 16.76 mtr Radius
- Auxiliary Hook : 80 MT @ all Radii
- Whip line : 30 MT @ all Radii

Boom Length:

- Main Hook : 57.90 mtr (190 feet)
- Auxiliary Hook : 64.00 mtr (210 feet)
- Whip line : 68.60 mtr (225 feet)

- Auxiliary Equipment :** 1 No. x 7.50 MT Air Tugger
2 Nos. x 5.00 MT Air Tuggers
1 No. x Air Compressor

CRANE LIFTING CAPACITIES

Working Radius (Mtr)	Main Hook			Auxiliary Hook		Whip Line	
	Capacity (MT)		Height (Mtr) *	Capacity (MT)	Height (Mtr) *	Capacity (MT)	Height (Mtr) *
	Over Stern	Revolv. 360°					
16.76	317	250	69.28				
18	312	250	68.87	80	76.23	30	81.34
20	292	250	68.37	80	75.78	30	80.95
22	263	248	67.80	80	75.26	30	80.51
24	239	225	67.15	80	74.67	30	79.99
26	219	209	66.41	80	74.00	30	79.42
28	202	197	65.59	80	73.28	30	78.77
30	188	187	64.67	80	72.48	30	78.06
32	176	176	63.67	80	71.59	30	77.28
34	165	165	62.57	80	70.62	30	76.42
36	153	153	61.35	80	69.55	30	75.49
38	141	141	60.03	80	68.40	30	74.47
40	129	129	58.58	80	67.15	30	73.38
42	117	117	56.99	80	65.78	30	72.19
44	106	106	55.25	80	64.31	30	70.91
46	96	96	53.35	80	62.71	30	69.53
48	87	87	51.24	80	60.97	30	68.04
50	79	79	48.90	75	59.08	30	66.43
52	72	72	46.28	70	57.01	30	64.69
54	65	65	43.32	65	54.74	30	62.81
56	58	58	40.00	55	52.24	30	60.76
58	52	52	35.80	50	49.45	30	58.55
60	45	45	30.61	40	46.31	30	56.11
62	--	--	--	35	42.69	30	53.42
64	--	--	--	35	38.40	30	50.43
Speed	4 mtr/min.			15.3 mtr/min.		44mtr/min.	
Wire dia	1 1/4" diameter			1 1/4" diameter		1 1/4" diameter	

(*) Height in mtr above Main Deck Level.

Rev. : 17

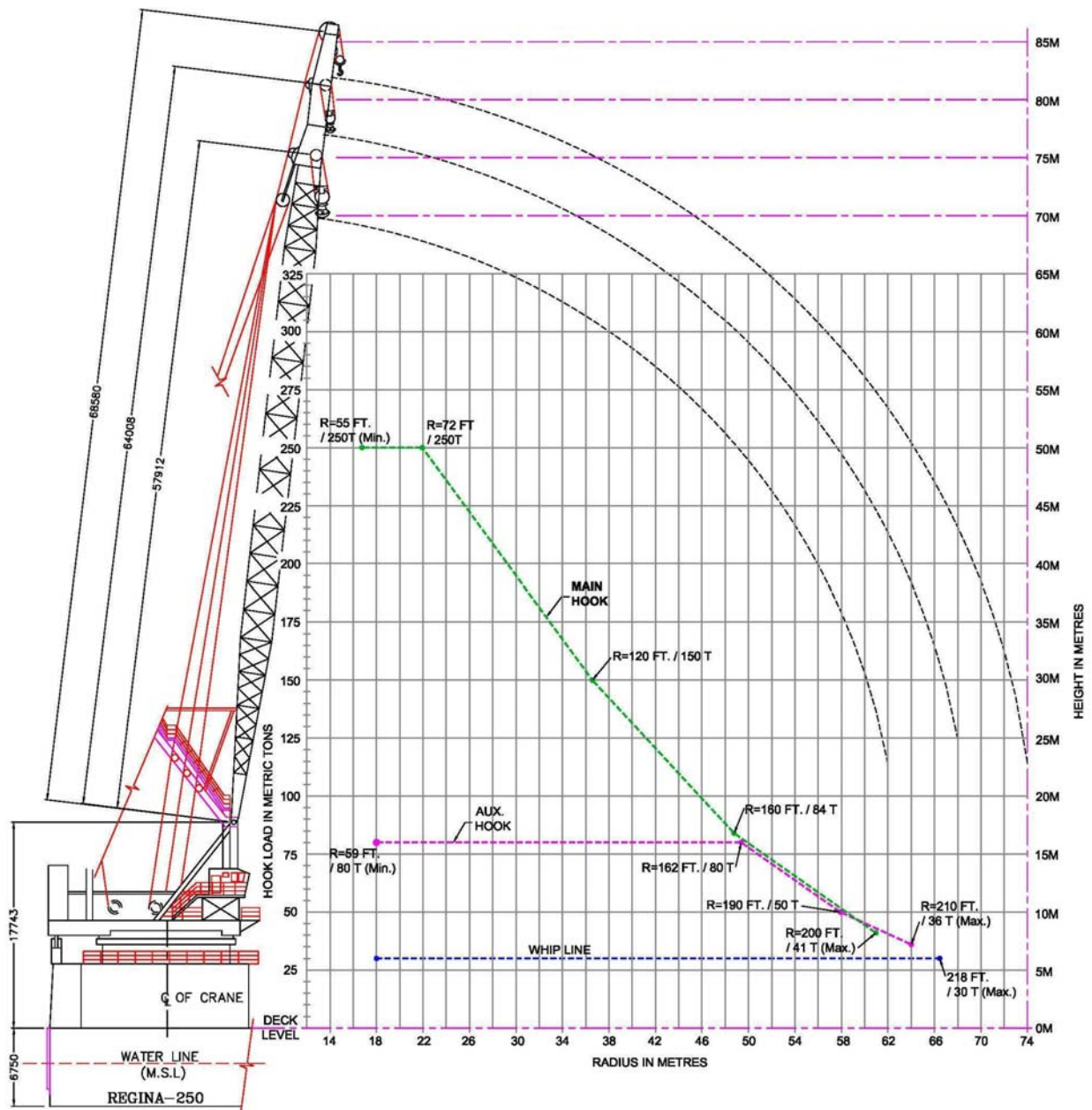
Date : 09.07.12

SPECIFICATIONS ARE SUBJECT TO CHANGE WITHOUT PRIOR NOTICE OR LIABILITY

Notes :

1. Distance from c.l. of Crane to : -
 - a) Edge of STERN longitudinal direction : 10.10 mtr
 - b) Edge of STBD & PORT direction : 13.00 mtr
2. Tie Down System : Cradle on Deck for Blocks.
3. Crane is equipped with, load & radius indicators, Sailor RT 2048 VHF Radio and CCTV monitoring system between crane operator cabin & crane engine room.
4. Crane is provided with Wind Speed and Direction Indicator.
5. Crane is provided with a CCTV system for monitoring the wire rope drums.

RADIUS / HOOK ELEVATION / CAPACITY CHART



13. PIPE LAY GEAR

Barge is equipped with Pipe Lay Gears suitable to lay 4" – 60" OD Pipelines.

a) Tensioner

2 Nos. × 62.5 MT Electrically Operated Tensioners.

Make : SAS, Model : SE62LCS30AC

b) A & R Winch

1 No. × 125 MT Electrically Operated A & R Winch

Make : SAS, Model : ARW 125 E 30 AC

Wire Rope : 900 mtr long x 70 mm diameter.

c) Pipe Handling System

- 9 Nos. × 35 MT each PHH longitudinal end roller system. Conveying speed 15 mtr/min.
- 1 No. × 35 MT PHH transverse walking beam conveyor system to lift and transfer pipes to Lineup Station.
- 2 Nos. × 35 MT PHH Lineup Modules. Rated speed 30 mtr/min.
- 4 Nos. × 45 MT pipe support rollers.
- 1 No. × 90 MT Adjustable Pipe Support roller.
- 1 No. × 120 MT Adjustable Stern track roller.

d) Pipe Facing Machine

3 Nos. × Darby Hydraulic Pipe Facing Machines to suit pipe sizes.

e) Internal Lineup Clamp

- 2 Nos. × Pneumatic Lineup Clamps to suit pipe sizes.
- 2 Nos. × Quincy 325 HP, 18 cfm, 10 Bar Compressors to operate Internal Lineup Clamps.

f) Field Joint Coating System

2 Nos. x 128 Ltrs. Capacity each Air Driven Foam fill unit.

Make : GRACO, Model : 952802

g) Stinger

- Short rigid stinger for shallow waters
- Floating stinger either one section of 37 mtr; or two sections of 68 mtr (37 mtr & 31 mtr), for deep water.



h) Davits

4 - 5 Nos. × 40 - 50 MT Capacity each (mobilized if required during Project stages)

i) Ramp

- Pipe Lay Ramp 3.5 mtr wide x 56 mtr long is located at STBD side of the Barge.
- Stinger hitch provided for connecting rigid or floating stinger with the Barge.

14. MOORING SYSTEM

- 8 Point Mooring System
- 8 Nos. self adjusting fair leads with 8 - 10 MT Delta Flipper Anchors.
- 4 Anchor lines with 1200 mtr long × 52 mm (or 1500 mtr × 44 mm) diameter wire rope on each.
- 4 Anchor Lines with 1200 mtr × 44 mm diameter wire rope on each.
- 2 Nos. Double Drum SKAGIT DTW 100 Winches driven by Detroit Diesel V-6 Engine.
- 4 Nos. Single Drum Intercon SD200 Winches driven by John Deere Diesel Engines.
- All Mooring Winches are controlled from the Barge Tower.
- All anchor lines are fitted with sensing devices for measuring tension, wire rope pay in/out length & speed. Winch Drums are monitored by CCTV from the tower.

15. SERVICE TANKS

- 4 Nos. Fresh Water Tanks with total capacity of : 1,500 Cu.M.
- 6 Nos. Fuel Tanks with total capacity of : 640 Cu.M.
- 14 Nos. Ballast Tanks with total capacity of : 3,900 Cu.M.

16. ACCOMMODATION

The Barge is equipped with air conditioned quarters for 253 personnel with galley, recreation rooms, hospital and offices. The available cabins are as follows: -

- Single Berth Cabin : 04 Nos.
- Twin Berth Cabin : 05 Nos.
- Four Berth Cabin : 59 Nos.

Each cabin has its own shower and toilet facilities with running cold and hot water.



17. HOSPITAL

Located at Main Deck. Hospital is equipped with Medical Equipment & Beds for the observation of the patients.

18. HELIDECK

The Helideck (19 mtr × 19 mtr) is located at the Port BOW of the Barge and suitable for the landing of Bell 212 & Bell 412 type of Helicopters. Helideck 'D' value is 17.5 mtr.

19. HEAT, VENTILATION & AIR CONDITIONING SYSTEM

- HVAC is provided by 2 Nos. with air handlers throughout Accommodation and Offices.
- HVAC Ducts for cold / hot air are provided with adjustable diffusers.

20. BARGE POWER

- 5 Nos. × 500 kW Caterpillar SR4 Generators powered by D 3412 Engine (440V, 60 Hz).
(Main Generators are paralleled and synchronized).
- 1 No. × 425 kW Leroy Somer Generator powered by Perkins Engine (440V, 60 Hz) as Emergency Generator.
(Emergency Generator starts automatically within 45 seconds in case of Main Generators failure).

21. WATER MAKER

- 2 Nos. × 40 MT/ day Aqua-Tech Reverse Osmosis units.

22. OILY WATER SEPERATOR

- 1 No. × 2.5 m³ /hr. Turbulo-Compact Separator
Model - TCS-HD-2.5 (15 PPM)

23. SEWAGE TREATMENT PLANT

- 2 Nos. × 500 persons Sewage Treatment Plants, Model – ORCA 11A 500

24. AIR COMPRESSORS

- 1 No. x 800 cfm @ 125 psi Ingersoll Rand Diesel Driven
Model: 9/230
- 1 No. x 800 cfm @ 125 psi Ingersoll Rand Diesel Driven
Model: XP 800

25. MAIN WORKING DECK

The working area of deck is covered with double layer, crossed, heavy duty timber. Clear Deck Area is 1000 M².

26. WORKSHOP

Barge is equipped with a workshop in the Main Deck level with following equipment.

- Lathe (Gazeneuve HB575) 1 No.
- Milling Machine (Laguen) 1 No.
- Shaping Machine (SH 450) 1 No.
- Radial Drill (Adam RD 40 - Type 40 - 1000) 1 No.
- Bench Grinder 1 No.
- Electric Hacksaw (Serm Layon) 1 No.

27. STORES

Barge is equipped with stores to keep equipment spares, welding accessories, rigging gears, consumables, paints etc.

28. WELDING SYSTEM

- VERMAAT Dual Torch Auto Weld System 6-8 Units
- Miller SRH 444 (400 Amps Electric) 9- 20 Units
- Miller Dimension 456 Inverters 8-10 Units
- Miller Big Blue 600 DX Diesel Engine driven multi-process Welding Generator 1 No.

29. COMMUNICATION / NAVIGATION EQUIPMENT

- GMDSS Equipment for Area A1+A2+A3
- SAILOR RT 2048 Marine VHF, 25/1 Watt 6 Units
- SAILOR RT 5022 Marine VHF DSC 2 Units
- SAILOR Compact 2000 (250 W)
MF DSC T2130, RE 2100, RM2150 1 Unit
- INMARSAT C , SAILOR TT 3000E Mini C 2 Units
Make : THRANE & THRANE
- INMARSAT Mini 'M' SATCOM System, 1 Unit
Make : THRANE & THRANE
(Equipped with Telephone, Fax & E-mail Facilities)
- GMDSS Hand Held Radio (SAILOR SP 3520) 3 Units
- NAVTEX Receiver / Accessories (JMC NT 900) 1 Unit
- GPS (KODEN, KGP 913) 1 Unit
- GYROCOMPASS (YOKOGAWA CMZ 700)
Installed in Radio Room with a repeater in Tower 1 Unit
- RADAR (KODEN MDC 1810P) 1 Unit
- ECHOSOUNDER (JMC) 1 Unit
- Wind Speed and Direction Indicator (RM YOUNG)
Installed in Radio Room with a repeater in Tower 1 Unit



- EPIRB (McMURDO E5) 1 Unit
- SART (McMURDO RT9/3) 2 Units
- SEATEL 9707 VSAT System 1 Unit
(Equipped with Telephone, Fax, Internet & E-mail Facilities)
- THURAYA Satellite Phone 1 Unit
- ICOM IC –A210 VHF Air Band Transceiver / ICON IC-A6 VHF
Portable Air Band Transceiver, headset with mic. 1 Unit
- AIS (SAMYUNG SI 30) 1 Unit
- NORSTAR 32 Points Intercom System. 1 Unit
- 6 Horn Speaker & 6 Box Central PA System 1 Unit

30. **BALLAST / BILGE PUMPS**

Barge is equipped with Ballast and Bilge Pumps as detailed below:

Ballast Pump

- 2 Nos. × 200 m³/hr @ 15 mtr head Pompes Maroger Ballast Pumps

Bilge Pump

- 2 Nos. × 90 m³/hr @ 30 mtr head Stanflow Main Bilge Pumps
- 2 Nos. × 90 m³/hr @ 30 mtr head Stanflow Emergency Bilge Pumps

31. **FIRE FIGHTING EQUIPMENTS / FACILITIES**

Fire Pumps

- 2 Nos. × 110 m³/hr @ 90 mtr head Electric Driven Main Fire Pumps.
- 1 No. × 110 m³/hr @ 90 mtr head Electric Driven Emergency Fire Pump.
- 1 No. × 110 m³/hr @ 100 mtr head General Service Pump also can be used as Emergency Fire Pump.

Fire Fighting System / Extinguishers

- 1 Set CO₂ Fire Fighting System with 30 Cylinders of 45 Kg. each for Machinery Spaces / Stores
- 1 Set CO₂ Wet Chemical System for Galley
- 2 Set Helideck Foam Fire Fighting System
- 1 No. CO₂ Fighting System (1 Cylinder 45 Kg.) for Paint Locker
- Fire Extinguishers : - As per SOLAS / Class Requirement

32. **HEAT AND SMOKE DETECTION**

Fixed Fire detectors are installed in all Cabins, Corridors, Service area and Machinery Space. The control panel is installed at the Tower.

Make : TYCO, Model : T1216



33. H₂S AND LEL GAS DETECTION

H₂S and LEL Gas Detectors installed in main deck with audible & visual alarms in Accommodation & Radio Room (Only installed when needed for a Project).

34. LIFE SAVING APPLIANCES

- **Life Rafts / Life Jackets**
As required by Flag / Class Society.
- **Life Buoys & MOB**
As required by Flag / Class Society.
- **Pyrotechnics**
As required by Flag / Class Society
- **Fast Rescue Boat**
2 × 6 Person JIANGYINSHI Fast Rescue Boat, Type JYB60G

