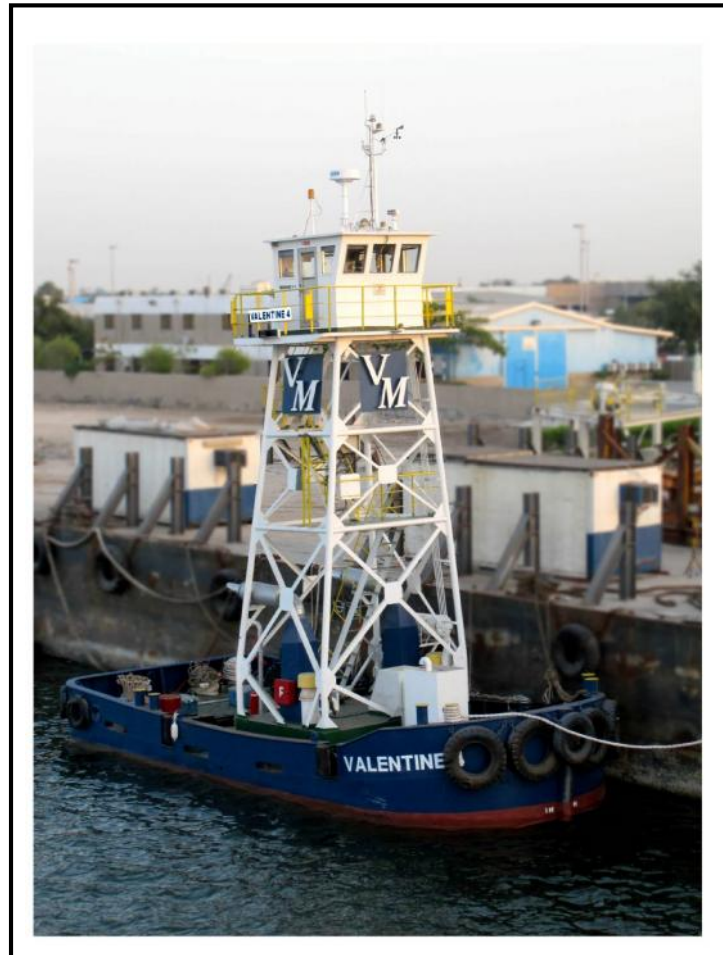




Specification of
DETACHABLE PROPULSION UNIT (DPU)
VALENTINE 4



Valentine Maritime (Gulf) LLC



DETACHABLE PROPULSION UNIT (DPU)
VALENTINE 4

1. NAME OF VESSEL : VALENTINE 4
2. OWNERS : VALENTINE MARITIME LTD.
3. YEAR BUILT : 1997
4. BUILDERS : WATANABE ZOENSYO CO. LTD.
5. FLAG : PANAMANIAN
6. PORT OF REGISTRY : PANAMA
7. GT : 32.76
8. NT : 26.21
9. DEAD WEIGHT : N/A
10. LIGHT SHIP : N/A
11. SPEED : 10.00 Knots
12. FUEL CONSUMPTION : 10.00 MT / DAY
13. HULL
 - a. Type of Vessel : Detachable Propulsion Unit (DPU)
 - b. Dimensions :

Length O.A.	13.48 mtr (44.20 feet)
Length	11.93 mtr (39.14 feet)
Breadth	5.80 mtr (19.00 feet)
Depth	2.00 mtr (6.50 feet)
Air Draft	12.50 mtr (41.00 feet)
14. PROPULSION SYSTEM / THRUSTERS

MAIN ENGINE	: 2 Nos.
MAKE	: YANMAR
MODEL	: 6N165-EN
TOTAL POWER	: 1192 KW
15. MOORING SYSTEM

Stockless Bower Anchor	: 2 Nos.
Anchor Weight	: 160 Kg
Chain Length	: 220 mtr



16. COMMUNICATION / NAVIGATION EQUIPMENT

- VHF DSC 1 No .
Make : SAMYUNG, Model : STR-6000A
- MF / HF DSC 1 No.
Make : SAMYUNG, Model : SRG 1150
- GMDSS Portable 1 No.
Make : SAMYUNG, Model : STV-160
- AIS 1 No.
Make : SAMYUNG, Model : SI-30
- Navtex Receiver 1 No.
Make : SAMYUNG, Model : SNX-300
- EPIRB 1 No.
Make : ACR Electronics, Model : RLB-32
- SART 1 No.
Make : ACR Electronics, Model : PF-3
- RADAR 1 No .
Make : MARK, Model : MARK-2
- GPS 1 No.
Make : KODEN

17. FIRE FIGHTING EQUIPMENTS / FACILITIES

As required by Flag / Class Society.

18. HEAT AND SMOKE DETECTION

As required by Flag / Class Society.

19. H₂S AND LEL GAS DETECTION

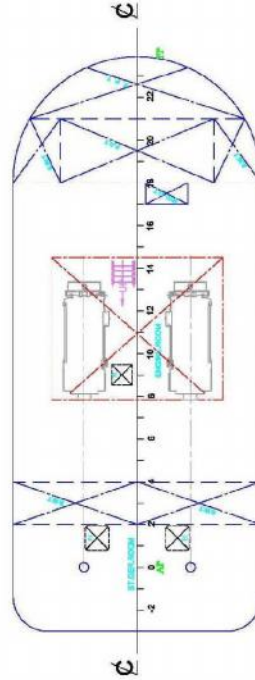
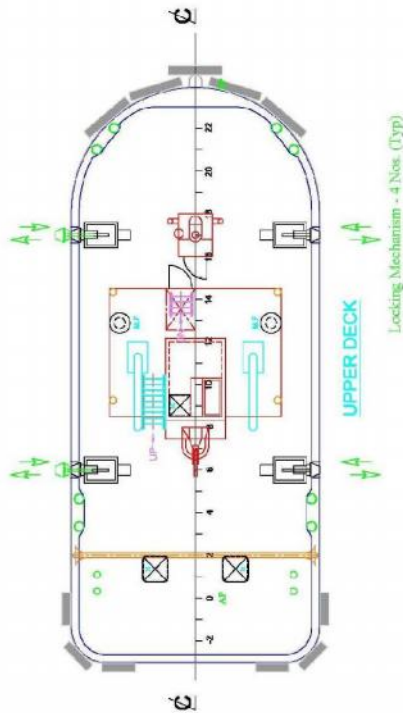
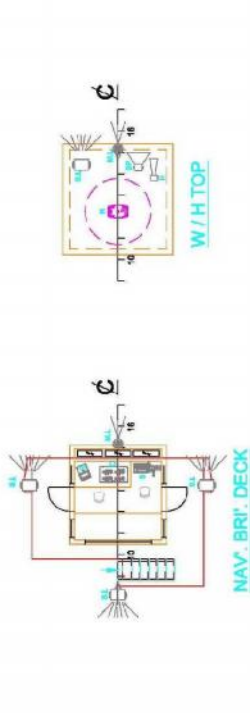
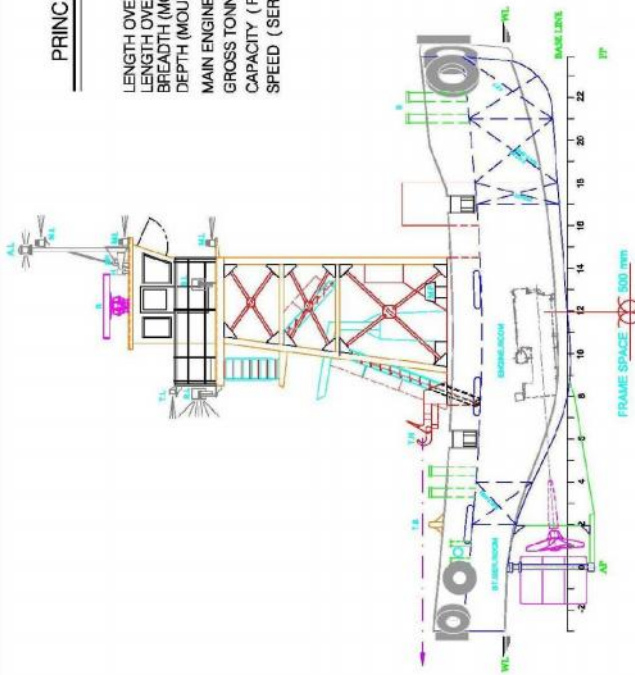
Only installed when needed for a project.

20. LIFE SAVING APPLIANCES

- Life Rafts / Life Jackets
As required by Flag / Class Society.
- Life Buoys & MOB
As required by Flag / Class Society.
- Pyrotechnics
As required by Flag / Class Society

PRINCIPAL PARTICULARS

LENGTH OVERALL (L.O.A)	13.48 M
LENGTH OVERALL (P.P)	11.96 M
BREADTH (MOULDED)	1.50 M
DEPTH (MOULDED)	2.00 M
MAIN ENGINE	500 X 2
GROSS TONNAGE	19 ^{GT}
CAPACITY (F.O.)	7.0 ^{MT}
SPEED (SERVICE)	10.0 ^{KT}



CLIENT:		VALENTINE MARITIME (GULF) L.L.C.	
ISSUED FOR INFORMATION		ABC-DHABI, U.A.E.	
REV. DATE	DESCRIPTION	TKK EKC RAM KGS PMC	TITLE: VALENTINE-4 (GA)
00 01/08/10		BY CHK/RVD/AP/D	
SCALE: N.T.S	SIZE: A3	DRAWN: TKK	DRAWING No: VAL4-GEN-GA-001
		CHECKED: EKC	SHEET No: 00
			1 of 1