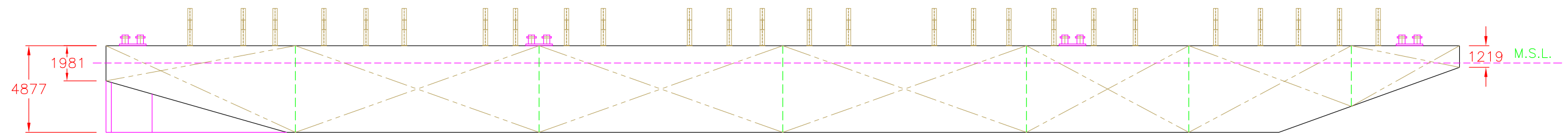
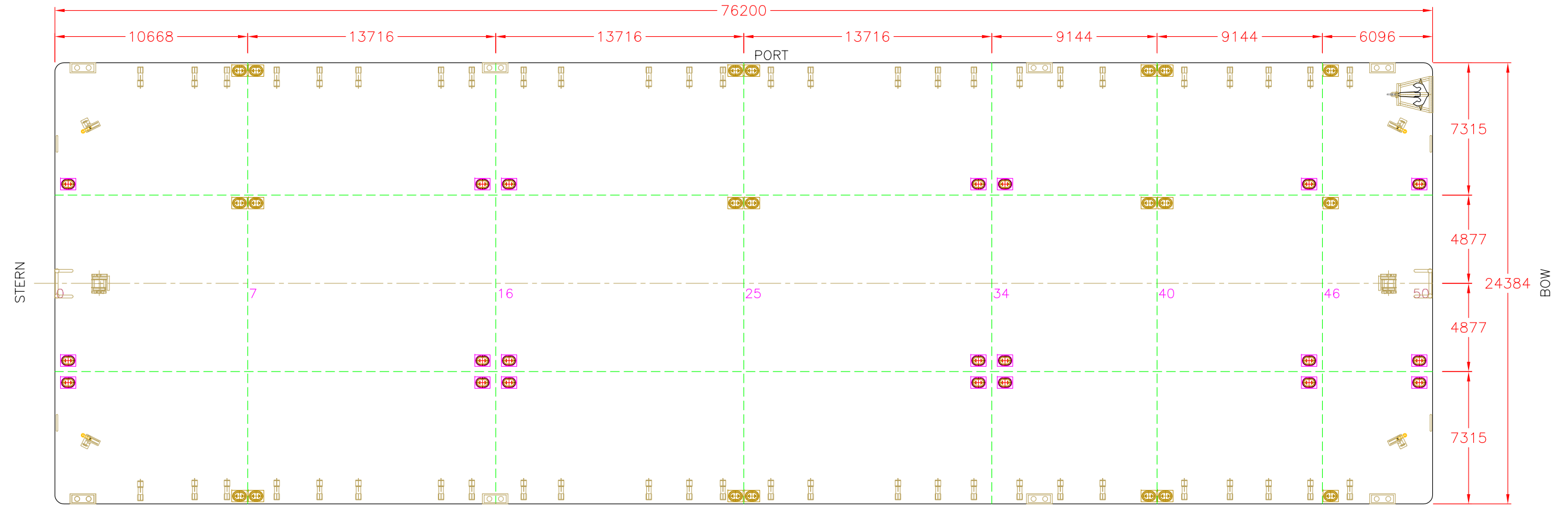


**PRINCIPAL DIMENSIONS**

LENGTH = 76.20 M. (250')  
 WIDTH = 24.38 M. (80')  
 DEPTH = 4.88 M. (16')  
 DRAFT = 3.90 M. (12.8')



ELEVATION



STAR BOARD

PLAN


DECK LOADING = 12.0 T/M<sup>2</sup>

☞ - 21 NOS. NEW MANHOLES ADDED

X:\DRAWINGS\VML2\BRGA00102

02	14/09/11	RE-ISSUED FOR INFORMATION	CHS	VMM	SVR	KGS
01	10/04/08	RE-ISSUED FOR INFORMATION	MDR	EKC	SVR	KGS
00	04/12/06	ISSUED FOR INFORMATION	EKC	KGS	AKJ	AKJ
REV	DATE	DESCRIPTION	BY	CH'K	RV'D	AP'D
SCALE: 1:200		SIZE: A3	DRAWN: EKC		CHECKED: KGS	

CLIENT:	INTERNAL
PMC:	INTERNAL

 VALENTINE MARITIME (GULF) L.L.C. ABU-DHABI, U.A.E.			
TITLE: CARGO BARGE VML-2 GENERAL ARRANGEMENT PLAN			
JOB No.	DRAWING No.	SHEET No.	REV.
	VML2-BRG-GA-001	1 of 1	02