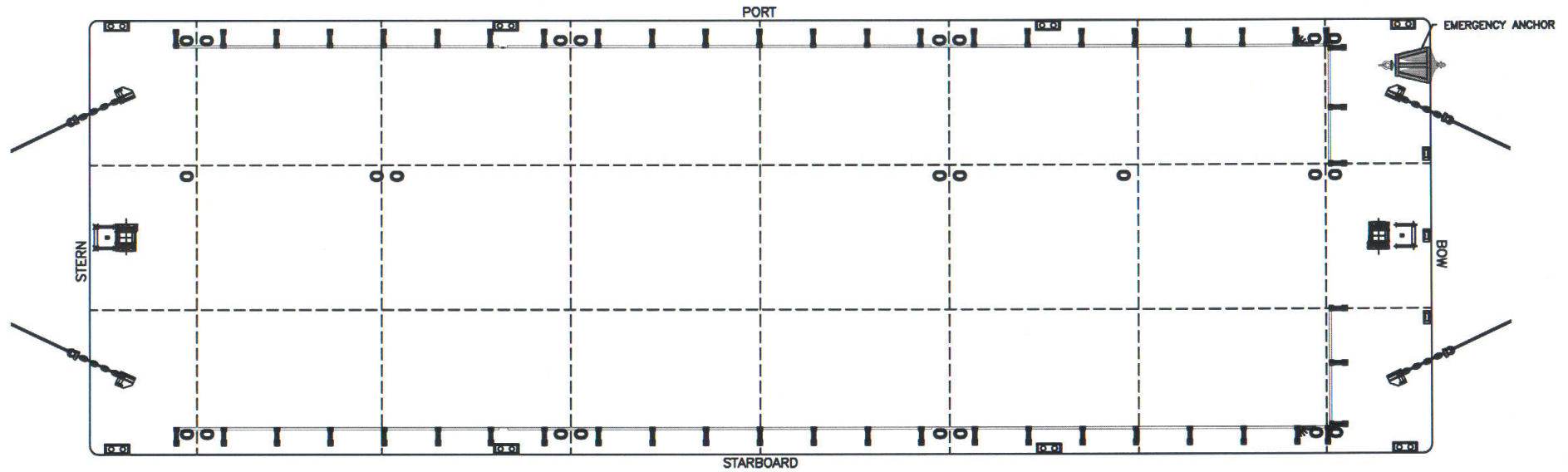
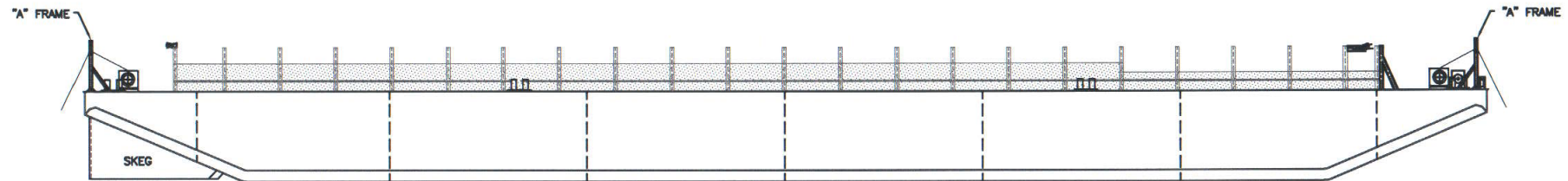


SPECIFICATIONS:-

TYPE	-	CARGO BARGE
CLASS	-	ABS
LENGTH (O.A)	-	250 FT. (76.2 M)
BREADTH (MOULDED)	-	80 FT. (24.384 M)
DEPTH (MOULDED)	-	16 FT. (4.877 M)
DEAD WEIGHT	-	5,400 Tons.
DRAFT	-	11.80 FT (3.60 M)
DECK LOADING	-	15 T/M ²



VML-3 PLAN



ELEVATION

NOTES:

1. ALL DIMENSIONS ARE IN MM. UNLESS OTHERWISE SPECIFIED.

03	03/07/10	REVISED & RE-ISSUED FOR INFORMATION	KSM	EKC	ZMT	KGS	CLIENT:
02	02/11/09	REVISED & RE-ISSUED FOR INFORMATION	ECM	EKC	SVR	KGS	INTERNAL
01	22/04/08	REVISED & RE-ISSUED	MDR	EKC	SVR	KGS	
00	15/09/07	ISSUED FOR INFORMATION.	ECM	EKC	KGS	KGS	PMC:
REV	DATE	DESCRIPTION	BY	CH'K	RV'D	AP'D	INTERNAL

VALENTINE MARITIME (GULF) L.L.C.
ABU-DHABI, U.A.E.

TITLE: **CARGO BARGE VML-3**
GENERAL ARRANGEMENT PLAN

JOB No.	DRAWING No.	SHEET No.	REV.
-	VML3-BRG-GA-001	1 of 1	03