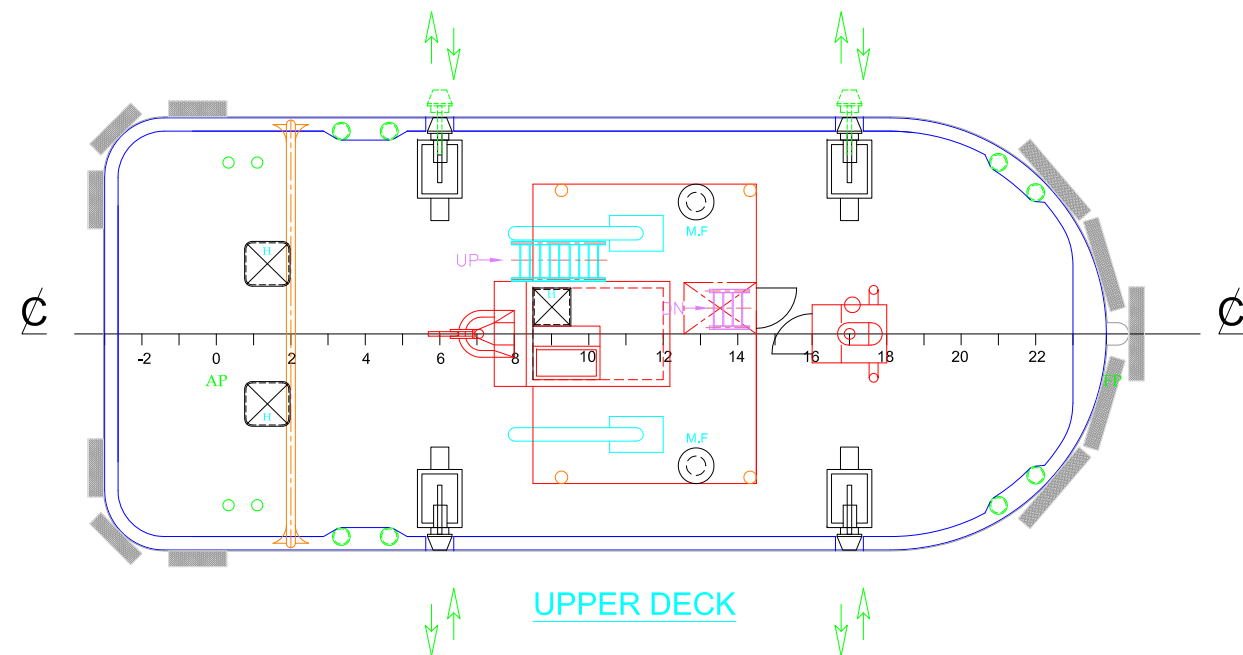
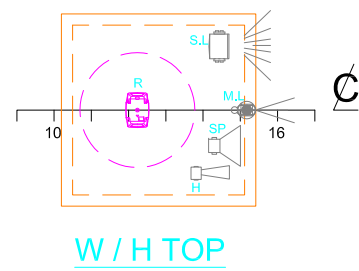
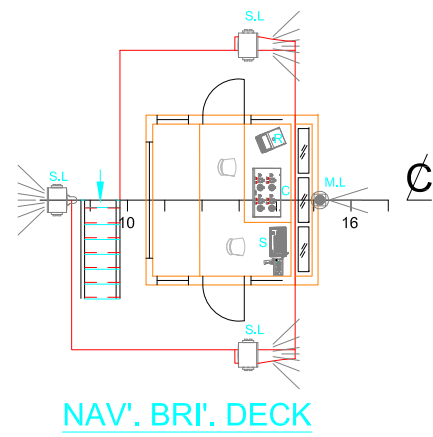
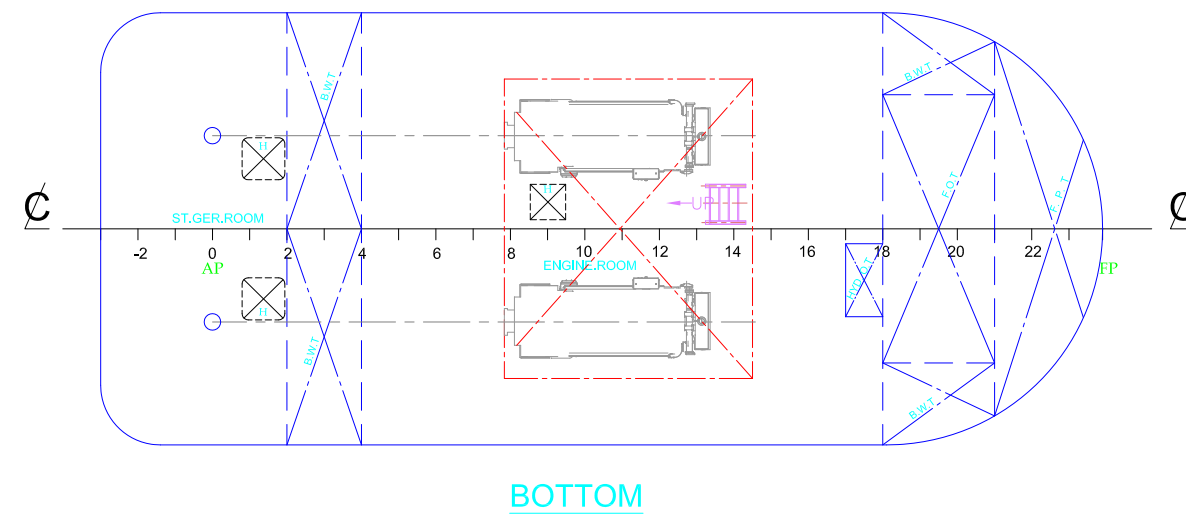
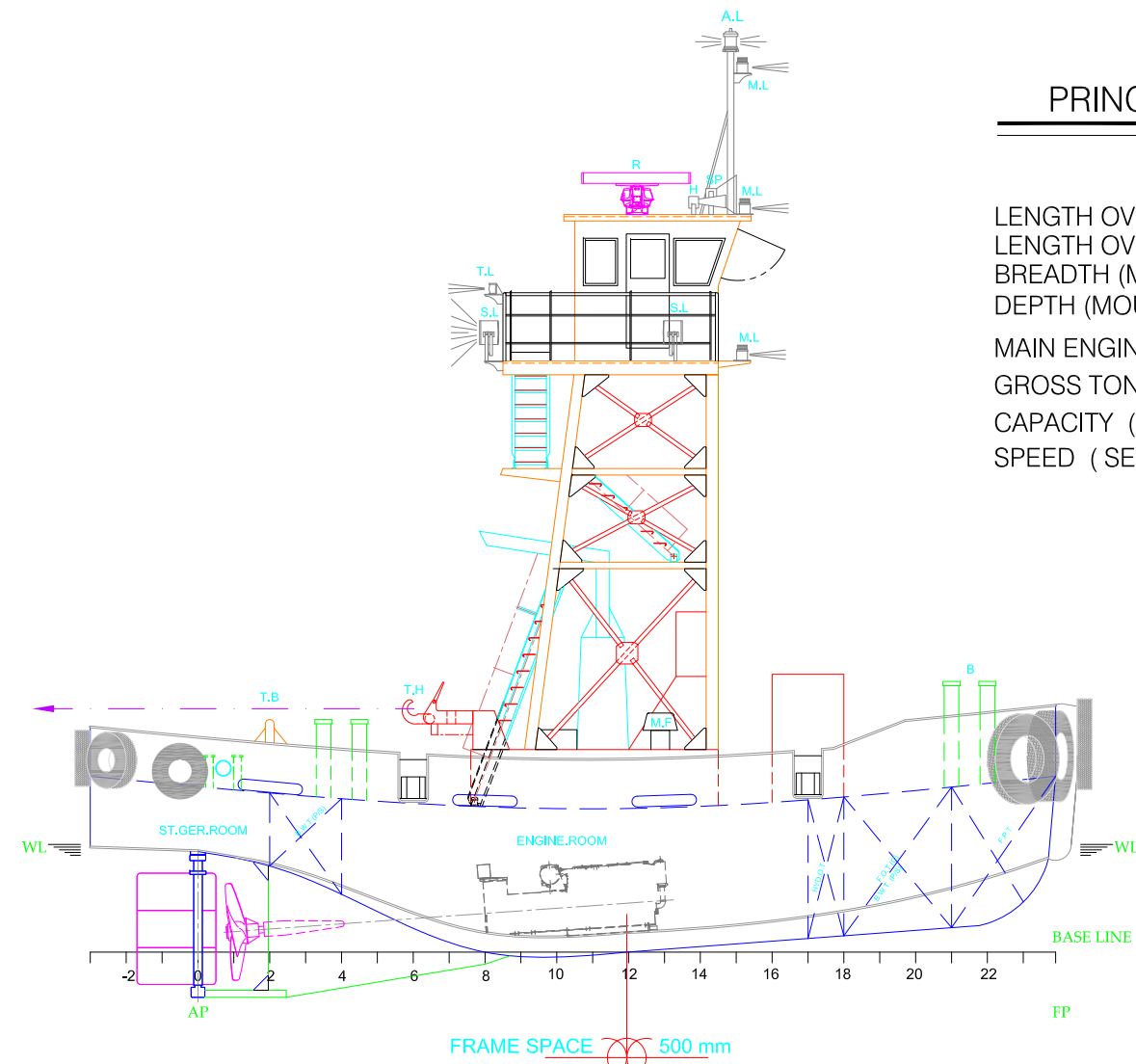


**PRINCIPAL PARTICULARS**

LENGTH OVERALL ( L.O.A )	13.48 M
LENGTH OVERALL ( P.P )	11.95 M
BREADTH (MOULDED)	1.50 M
DEPTH (MOULDED)	2.00 M
MAIN ENGINE	500 <sup>PS</sup> X 2
GROSS TONNAGE	19 <sup>GT</sup>
CAPACITY ( F.O. )	7.0 <sup>KL</sup>
SPEED ( SERVICE )	10.0 <sup>KT</sup>



Locking Mechanism - 4 Nos. (Typ)



00	01/08/10	ISSUED FOR INFORMATION	TKK	EKC	RAM	KGS	
REV	DATE	DESCRIPTION	BY	CH'K	RV'D	AP'D	
SCALE:	N.T.S	SIZE:	A3	DRAWN:	TKK	CHECKED:	EKC

CLIENT:	INTERNAL
PMC:	INTERNAL

<b>VALENTINE MARITIME (GULF) L.L.C.</b> ABU-DHABI, U.A.E.			
TITLE: <b>VALENTINE-4 (GA)</b>			
JOB No.	DRAWING No.	SHEET No.	REV.
	VAL4-GEN-GA-001	1 of 1	00