



## ANCHOR HANDLING / TOWING VESSEL VALENTINE 3

1. NAME OF VESSEL : VALENTINE 3
2. OWNERS : VALENTINE MARITIME (GULF) L.L.C.
3. YEAR BUILT : 1998
4. BUILDERS : YANTAI RAFFLES SHIPYARD LTD, CHINA
5. FLAG : U.A.E
6. PORT OF REGISTRY : Abu Dhabi
7. GRT : 484
8. NRT : 145
9. DEAD WEIGHT : 415.32 MT
10. SPEED : 12 Knots
11. FUEL CONSUMPTION : 8.00 MT / DAY
12. BOLLARD PULL : 55.00 MT
13. HULL
  - a. Type of Vessel : AHT/ Standby/ Ocean Going Vessel / Fire Fighting.
  - b. Classification : Bureau Veritas, I 3/3 E, Tug, Deep Sea
  - c. Dimensions : Length 36.08 meters (118.34 feet)  
Breadth 11.40 meters (37.40 feet)  
Depth 4.95 meters (16.24 feet)  
Draft 4.00 meters (13.12 feet)
  - d. Fenders : Heavy Duty rubber tire Fenders at regular intervals.
  - e. Mooring / Towing Fittings : Equipped with necessary bollards bits, and towing / Anchor Handling winch.

Rev. : 01

Date : 01.01.07

**SPECIFICATIONS ARE SUBJECT TO CHANGE WITHOUT PRIOR NOTICE OR LIABILITY**

X:\V3\Specification\V3 Specification Rev.01.doc

- 1 -



#### 14. PROPULSION SYSTEM / THRUSTERS

|              |   |   |
|--------------|---|---|
| MAIN ENGINE  | : | 2 x 2000 BHP @ 720 rpm  |
| MAKE         | : | YANMAR  |
| MODEL        | : | Z 280A – EN   |
| PROPELLER    | : | 2 x Fixed Pitch, 4 Bladed KAPLAN<br>Type Manganese Bronze with KORT nozzle.   |
| BOW THRUSTER | : | 1 x Kawasaki KT – 32B controlled pitch type<br>Bow Thruster<br>Diameter : 1000.00 mm<br>No. of Blades : 4<br>Propelled speed : 596 RPM<br>Input Shaft Speed : 1450 RPM<br>Input Power : 230 KW<br>Thrust : 3.60 Ton |

#### 15. TOWING / ANCHOR HANDLING ARRANGEMENT

Vessel is equipped with a Double Drum Electro Hydraulic waterfall type winch.

|                      |   |  |
|----------------------|---|--|
| MAKE                 | : | PLIMSOLL   |
| CAPACITY             | : | 75.00 T First Layers @ 8.00 m / min<br>37.50 T mid Layer @ 16.00 m / min   |
| BREAKING CAPACITY    | : | 150 MT   |
| TOWING DRUM CAPACITY | : | 48 mm Dia x 800 m Long Wire Rope (Max)   |
| ANCHOR HANDLING DRUM | : | 48 mm Dia x 800 m Long Wire Rope (Max)   |
| STERN ROLLER         | : | 3.50 m Length x 1.5 m Diameter.  |
| TOWING PINS          | : | PLIMSOLL 200T  |
| SHARK JAWS           | : | PLIMSOLL PR – HLJ – 300 T  |
| CONTROLS             | : | <u>Anchor Handling Winch</u><br>Locally & Remotely from Wheel House.<br><br><u>Towing Pin / Shark Jaws</u><br>Locally & Remotely from Wheel House. |

Rev. : 01

Date : 01.01.07

**SPECIFICATIONS ARE SUBJECT TO CHANGE WITHOUT PRIOR NOTICE OR LIABILITY**

X:\V3\Specification\V3 Specification Rev.01.doc

- 2 -



## 16. MOORING

Vessel is equipped with 1 No. Electro – hydraulic windlass on the forecastle deck with Double Gypies.

MAKE : PLIM SOLL ROBERTSON.  
CAPACITY : 6.00 MT @ 10 m / min (Double Gypies)

Vessel is equipped with 1 No. Electro-Hydraulic Tugger winch in the PORT side of Main Deck.

MAKE : PLIMSOLL  
CAPACITY : 5.0 Ton @ 15 m / min.

## 17. SERVICE TANKS

Fresh Water capacity : 84.00 Cu.M.  
Fuel capacity : 350.00 Cu.M.

## 18. BUNKER DISCHARGE RATES

Fuel : 10 m<sup>3</sup> / hr @ 18 M Head  
Fresh Water : 10 m<sup>3</sup> / hr @ 18 M Head

## 19. ACCOMMODATION

Vessel is equipped with air-conditioned quarters for 17 personnel. The available cabins are as follow :-

Single - Berth Cabin : 3 Nos.  
Twin - Berth Cabin : 3 Nos.  
Four - Berth Cabin : 2 Nos.

## 20. AIR CONDITIONING SYSTEM

Vessel is equipped with 3 No. A/C and AHU units.

MAKE : 2 X CARLYLE / 1 X CARRIER  
MODEL : 06 EA 550600 / 40RQ – 016 – 033.25



## 21. VESSEL POWER

- 3 Nos. LEROY SOMER LSA M 47 – I L9 C6 / 4 Generator Driven by CAT D 3408 TA Engine (Capacity 300 KW each, 50 Hz).
- 1 No. LEROY SOMER LSA M 441M 3 Generator powered by PERKINS 4 TGM / 01 Engine (Capacity 50 KW, 50 Hz) as emergency Generator.

## 22. OILY WATER SEPERATOR

Vessel is equipped with 1 No. x 15 PPM oily water separator.

MAKE : SHANGHAI MARINE INSTRUMENT

TYPE : ZYF – 1

## 23. OIL DISPERSANT

Vessel is equipped with Spray Boom System.  
Dispersant Detergent Tank storage Capacity = 5.00 Cu.M.

## 24. SEWAGE TREATMENT

Vessel is equipped with Screw type Sewage pump and Sewage holding tank.

MAKE : TIAN JIN INDUSTRIAL PUMP FACTORY  
MODEL : GFN65 / 2A

## 25. AIR COMPRESSORS

1 No. x NINGBO TIYU Air compressor.

MODEL : CZ 20 / 30 S2K  
CAPACITY : 20 CuM / HR  
PRESSURE : 30 BAR

1 No. x SPERRE Air Compressor

MODEL : HL 2 /77  
CAPACITY : 25 CuM / HR  
PRESSURE : 30 BAR

## 26. WORKING DECK

The working area is partially covered with heavy duty timber.

Clear Deck space is 16.50 MTR x 9.00 MTR i.e. 148.50 SQM.

Deck Strength = 3.00 MT / SQM



## 27. COMMUNICATIONS

|                   |   |   |
|-------------------|---|---|
| GMDSS             | : | Sea Area A1 + A2 + A3   |
| SATCOM            | : | INMARSAT C.<br>MAKE : JRC, MODEL : JUF – 75C                                    |
| MF / HF (GMDSS)   | : | 1No. MAKE : JRC, MODEL : JSS - 800  |
| S S B             | : | 1No. MAKE : JRC, MODEL : JSS - 800  |
| WEATHER FACSIMILE | : | 1 No. MAKE : JRC, MODEL : JAX 9A  |
| VHF               | : | 2 Nos. MAKE : JRC, MODEL : JHS – 32A<br>2 Nos. MAKE : SAILOR, MODEL : RT – 2028 |
| RADAR             | : | 2 Nos. MAKE : JRC<br>MODEL : JMA 2254   |
| GYRO COMPASS      | : | 1 No. MAKE : YOKOGAWA DEN SHIKIKI<br>Repeater 2 Nos., MODEL : KR 005AP          |
| MAGNETIC COMPASS  | : | 1 No. MAKE : SAURA KEIKI,<br>MODEL : MR 150A                                    |
| AUTO PILOT        | : | 1 No. MAKE : COMNAV   |
| ECHO SOUNDER      | : | 2 Nos. MAKE : FURUNO,<br>MODEL : FE6300 / FCV - 612                             |
| EPIRB             | : | 1 No. MAKE : JRC, MODEL : JQE – 3A  |
| GPS NAVIGATOR     | : | 1 No. MAKE : JRC, MODEL : NW2 - 4550  |
| BAROMETER         | : | 1 No. MAKE : BARICO   |
| NAVATEX RECEIVER  | : | 1 No. MAKE : JRC, MODEL : NCR 300A  |
| P.A SYSTEM        | : | 1 Unit MAKE : JRC, MODEL : NVA 1205B  |
| WIND SPEED LOG    | : | BEAUFORT, MODEL : DELTA 130   |



**28. SEARCH LIGHTS**

Vessel is equipped with search lights to cover the working areas in BOW and STERN.

**29. FIRE FIGHTING EQUIPMENTS / FACILITIES**

- **Fire Pumps**

- CAT D3408 Diesel Engine Driven Fire Pump
- 1 x 70 m<sup>3</sup> Taiko General Service/ Fire pump.

- **Fire Fighting System Extinguishers**

- Portable Fire Extinguishers as required by SOLAS / CLASS
- CO<sub>2</sub> Fire Extinguishing system for alley and Engine Room.

**30. HEAT AND SMOKE DETECTION**

Heat and smoke sensors installed with audible & visual alarms in all quarters, galley and decks.

**31. LIFE SAVING APPLIANCES**

- **Life Rafts / Life Jackets**

- As required by Flag / Class Society.

- **Life Buoys & MOB**

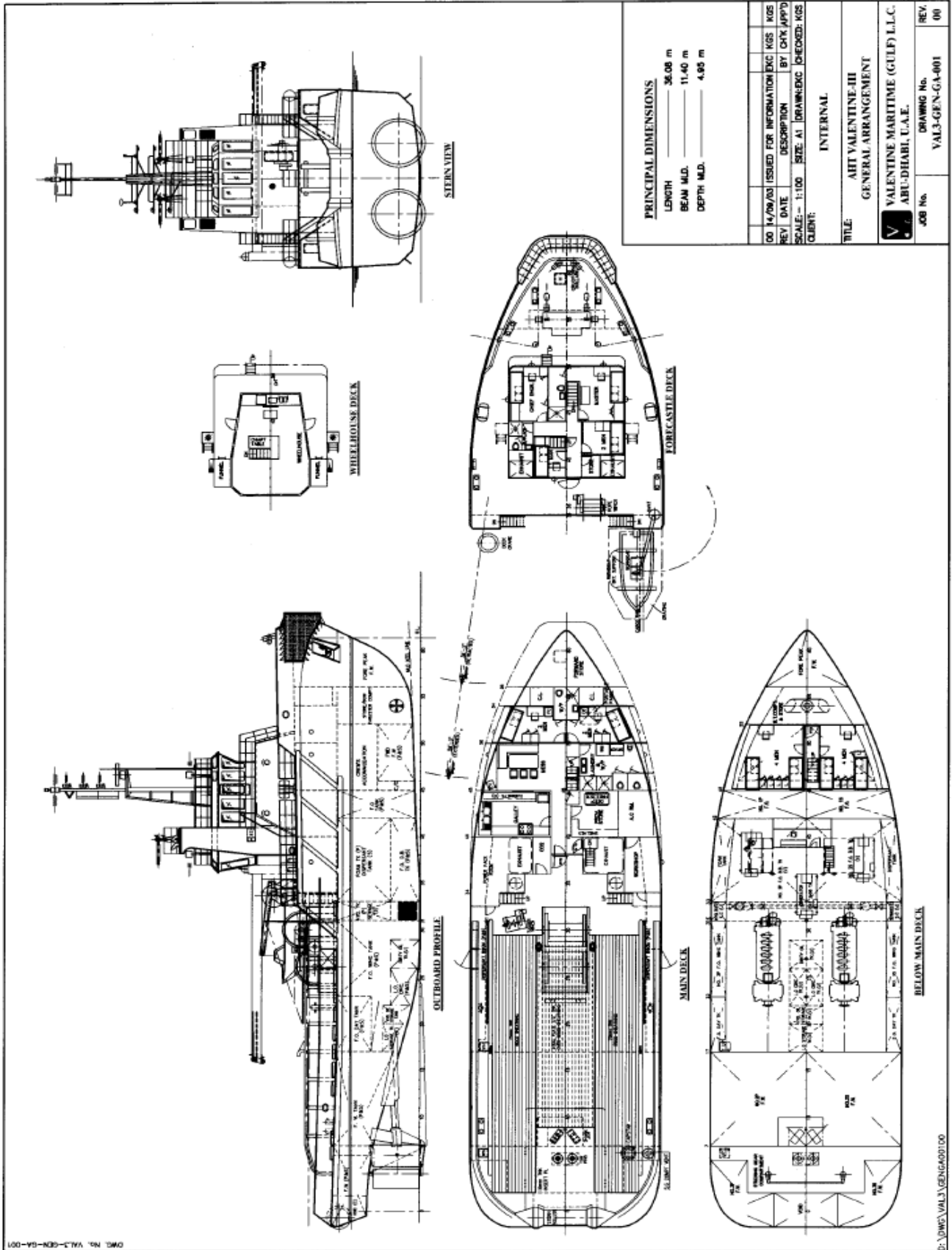
- As required by Flag / Class Society.

- **Pyrotechnics**

- As required by Flag / Class Society.

- **Rescue Boat**

- 1 x 6 men ZODIAC, ENGINE – JOHNSON, 25 HP.



Rev. : 01

Date : 01.01.07

**SPECIFICATIONS ARE SUBJECT TO CHANGE WITHOUT PRIOR NOTICE OR LIABILITY**

X:\V3\SpecificationV3 Specification Rev.01.doc

- 7 -