



CARGO BARGE VML 1

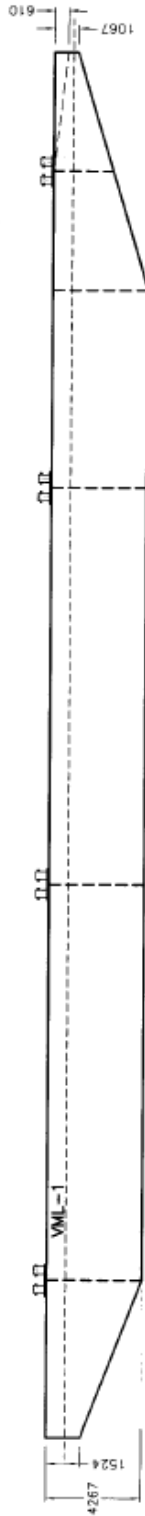
1. **NAME OF VESSEL** : VML 1
2. **OWNERS** : Valentine Maritime (Gulf) L.L.C.
3. **YEAR BUILT** : 2001
4. **BUILDERS** : PT ASL Shipyard, Indonesia
5. **FLAG** : U.A.E
6. **PORT OF REGISTRY** : Abu Dhabi
7. **GRT** : 1229
8. **NRT** : 369
9. **HULL**
 - a. Type of Vessel : Cargo Barge
Box type floating Pontoon, made of steel, all welded construction
 - b. Classification : Bureau Veritas
 - c. Dimensions : Length 64.00 meters (210.00 feet)
Breadth 18.29 meters (60.00 feet)
Depth 4.27 meters (14.00 feet)
Draft 3.43 meters (11.25 feet)
 - d. Fenders : Heavy Duty Rubber Tyre fenders at regular Intervals
 - e. Mooring / Towing Fittings: Equipped with necessary Bollard bits, Main tow bridle.
10. **DEAD WEIGHT** : 3200
11. **DECK STRENGTH** : 7 Ton / SQM
12. **MOORING SYSTEM**

One No. Manual Anchor winch of 7.0Ton SWL, with 1 No. Stockless Anchor of 483Kg.

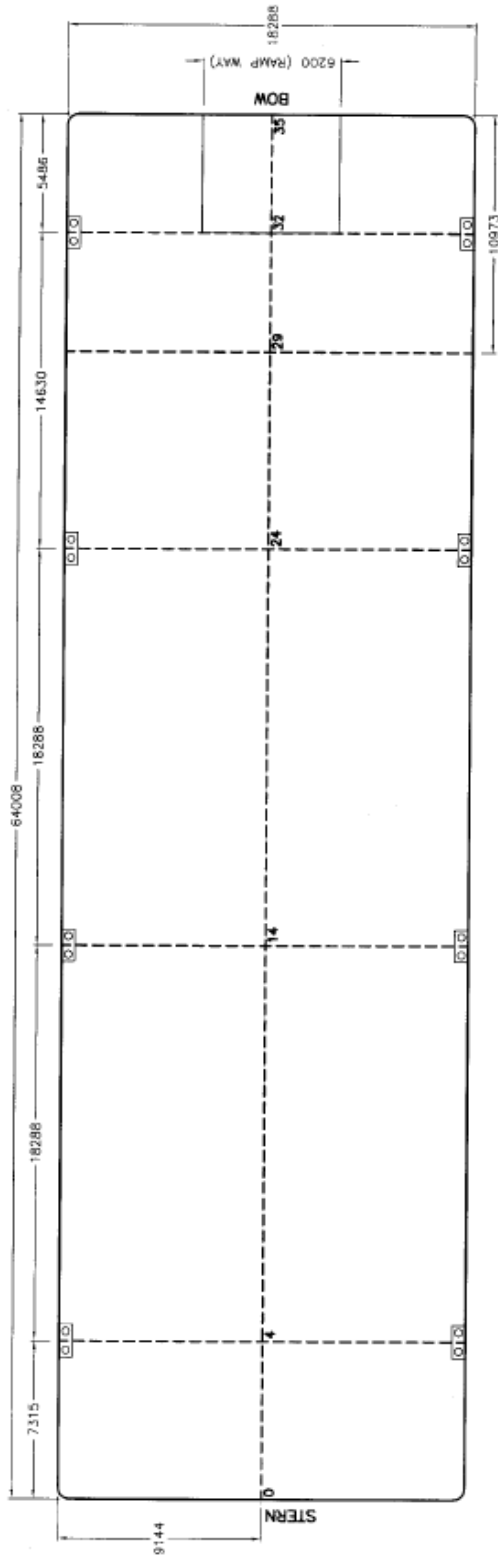


PRINCIPAL DIMENSIONS

LENGTH = 64.01 M. (210')
 WIDTH = 18.28 M. (60')
 DEPTH = 4.27 M. (14')
 DRAFT (MAX.) = 3.43 M. (11.2')



ELEVATION



PLAN

DECK LOADING = 7.0 T/M²

CLIENT:		INTERNAL		VALENTINE MARITIME (GULF) L.L.C. ABU-DHABI, U.A.E.	
REV	DATE	ISSUED FOR INFORMATION	EXC	KGS	AKJ
00	02/10/02	DESCRIPTION	BY	CH'X	APP'D
SCALE:	1:200	SIZE:	A3	DRAWN:	EXC
		CHECKED:	KGS		
JOB No.		DRAWING No.		REV.	
VML1-BRG-GA-001		VML1-BRG-GA-001		00	
TITLE:		GENERAL ARRANGEMENT PLAN			

D:\DWG\VML1\BRGGA001.DWG

Rev. : 00

Date : 23.10.02

SPECIFICATIONS ARE SUBJECT TO CHANGE WITHOUT PRIOR NOTICE OR LIABILITY