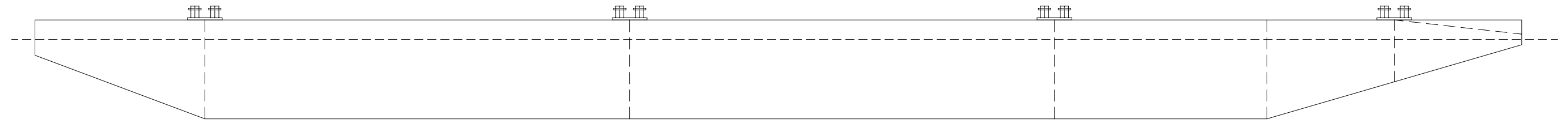
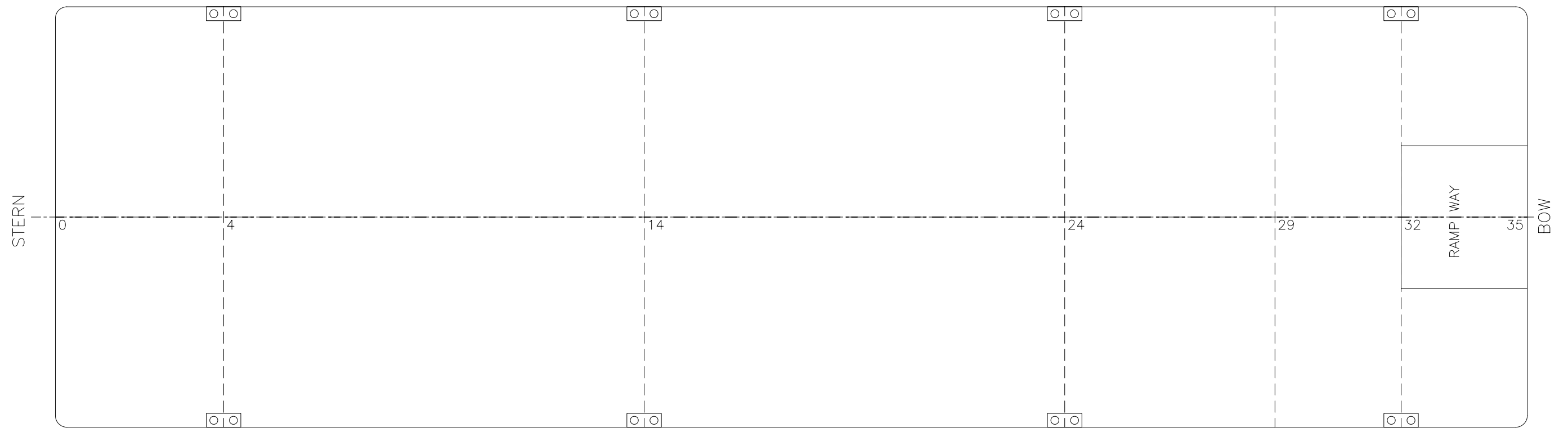


VML-1



ELEVATION



PLAN

PRINCIPAL DIMENSIONS

LENGTH = 64.01 M. (210')
WIDTH = 18.28 M. (60')
DEPTH = 4.27 M. (14')
DRAFT (MAX.) = 3.43 M. (11.2')
DECK LOADING = 7.0 T/M²