



## DERRICK LAY BARGE REGINA - 250

1. NAME OF VESSEL : REGINA-250
2. OWNERS : Valentine Maritime (Gulf) L.L.C.
3. YEAR BUILT : 1978, Re-built, Extended and Derrick Crane installed in 1982.
4. BUILDERS : Chantiers De La Garonne, Bordeaux, France
5. FLAG : U.A.E
6. PORT OF REGISTRY : Abu Dhabi
7. GRT : 5316
8. NRT : 1595
9. HULL
  - a. Type of Vessel : Derrick Lay Barge.  
Box type floating Pontoon, made of steel, all welded construction, with wooden deck & pipelay ramp.
  - b. Classification : Bureau Veritas Hull, Mach, Pontoon / NP, Unrestricted Navigation
  - c. Dimensions : Length 94.00 meters (310.00 feet)  
Breadth 26.00 meters ( 85.00 feet)  
Depth 6.75 meters ( 22.00 feet)  
Draft 3.83 meters ( 12.50 feet)
  - d. Fenders : Pipe fenders with heavy duty rubber tyres at regular intervals.
  - e. Mooring / Towing Fittings: Equipped with necessary bollards bits, 10 Fair leads, main & emergency tow bridles .
10. CRANES
  - a) **Derrick Crane**
    - Fully revolving, pedestal mounted CLYDE crane Model : 37-DE -190+20+15

**Capacities :**

    - Main Hook : 250 MT
    - Auxiliary Hook : 80 MT
    - Whipline : 30 MT

**Boom Length :**

    - Main Hook : 57.90 meters (190 feet)
    - Auxiliary Hook : 64.00 meters (210 feet)
    - Whipline : 68.60 meters (225 feet)

**Auxiliary Equipment** : 1 No. 7.50 MT Air Tugger  
2 No. 5.00 MT Air Tugger





**b) Pedestal Crane**

TADANO TR 151 Hydraulic Telescopic Pedestal Crane.  
Capacity : 17.00 MT.

**11. PIPE LAY GEAR**

**a) Tensioner**

One Electrically Operated Tensioner of 62.5 MT capacity.  
Make : SAS, Model : SE55LCS 30DC

**b) A & R Winch**

One Electrically Operated A & R winch of 60 MT capacity  
Make : SAS, Model : ARW 60 E 30 DC

**c) Dope Kettle**

2 Nos. Diesel Fired Dope Kettles of 5000 Ltrs Capacity each.  
Make : SELMERS Model : SK 8600

**d) Stinger**

- Short rigid stinger for shallow waters
- Floating stinger either one section of 37 m; or two sections of 68 m (37 m & 31 m), for deep water.

**e) Davits**

5 Nos. Davits of 25 to 40 MT capacity each.

**f) Ramp**

- Sidelay Ramp at starboard side.
- 3.5 meter wide by 56 meter long.
- Stinger hitch provided for connecting rigid or floating stinger with the Barge.

**g) Other Accessories**

Barge is equipped with Hydraulically operated Pipe Line Up Station and Longitudinal Pipe conveyor system.

**12. MOORING SYSTEM**

- 8 - 10 point mooring system
- 8 - 10 Nos. self adjusting fair leads with 8- 10 T Delta Flipper Anchors.
- 8 - 10 Anchor Lines with 4000 long x 1 3/4" diameter wire rope on each.
- 4 Nos. Double Drum SKAGIT Winches DTW 100 Winches driven by Detroit Diesel V-6 Engine.

Rev. : 08

Date : 19.12.06

**SPECIFICATIONS ARE SUBJECT TO CHANGE WITHOUT PRIOR NOTICE OR LIABILITY**

X:\Regina250\Specification\R250 Specification rev.08.doc



- 1 No. Double Drum AMCON 385 Winch driven by Detroit Diesel V-8 Engine.
- All Mooring Winches are controlled from the Barge Tower. All anchor lines are fitted with sensing devices for measuring tension, wire rope pay in/out length & speed. Winch Drums are monitored by CCTV from the tower.

### 13. SERVICE TANKS

- 4 Nos. Fresh Water Tanks with total capacity of : 1500 Cu.M.
- 6 Nos. Fuel Tanks with total capacity of : 640 Cu.M.
- 14 Nos. Ballast Water Tanks with total capacity of : 3900 Cu.M.

### 14. ACCOMMODATION

The Barge is equipped with air conditioned quarters for 250 personnel with galley, recreation rooms, hospital and offices. The available cabins are as follows :-

- Single - Berth Cabin : 4 No.
- Twin - Berth Cabin : 5 No.
- Four - Berth Cabin : 57 No.
- Eight Berth Cabin : 1 No.

Each cabin has its own shower and toilet facilities with running cold and hot water.

### 15. HOSPITAL

Located at Main Deck. Hospital is equipped with Medical Equipment, Accommodation for Medic & Bed for the observation of the patients.

### 16. HELIDECK

Helideck (19 m x 19 m), located at the Bow Portside suitable for the landing of Bell 212 & Bell 412 type of Helicopters.

### 17. VENTILATION & AIR CONDITIONING SYSTEM

- Air conditioning is provided by 2 Nos. York A/c Air Compressors with air handlers throughout Accommodation and Offices.
- Air Conditioning is provided with duct, for cold air, with adjustable diffusers.

Rev. : 08

Date : 19.12.06

**SPECIFICATIONS ARE SUBJECT TO CHANGE WITHOUT PRIOR NOTICE OR LIABILITY**

X:\Regina250\Specification\R250 Specification rev.08.doc



- AC Plant is designed for indoor / outdoor conditions as follows :

	Outdoor Conditions		Indoor Conditions	
	Temp.	Relative Humidity	Temp.	Relative Humidity
Summer	45° C	60%	26° C	50%
Winter	10° C	100%	20° C	50%

**18. BARGE POWER**

- 4 Nos. Caterpillar SR4 Generator powered by D 3412 Engine (Capacity 500 KW each, 60 Hz).
- 1 No. Lima Generator powered by GM Engine (Capacity 425 KW, 60 Hz) as emergency Generator.

**19. WATER MAKER**

- 2 No. Aqua-Tech Reverse Osmosis Water Maker with a capacity of 40 MT/ day each.

**20. OILY WATER SEPERATOR**

- 1 No. 15 PPM Turbulo-Compact Separator, Model TCS-HD-2.5 of Capacity 2.5 Cu.M/ Hr.

**21. SEWAGE TREATMENT PLANT**

- 2 Nos. Hamworthy Sewage Treatment Plant, Model T2809014A

**22. AIR COMPRESSORS**

- 2 Nos. Worthington Electric Driven Compressor, Model Rollair 125, 600CFM @110psi.
- 1 No. Ingersoll Rand Diesel Driven Compressor, Model 9/230, 800 CFM @ 125 psi
- 1 No. Ingersoll Rand Diesel Driven Compressor. Model : XP 800, 800 CFM @ 125 PSI.

**23. MAIN WORKING DECK**

The working area of deck is covered with double layer, crossed, heavy duty timber allowing deck loading in excess of 18 MT/ Square meter available. Clear Deck Area is 1000 SQM.



## 24. WORKSHOP

Equipped with following major equipment :

- Lathe (Gazeneuve HB575)
- Milling Machine (Laguen)
- Shaping Machine (SH 450)
- Radial Drill (Adam RD 40 - Type 40 - 1000)
- Welding Machine (Lincoln electric, 300 amp.)
- Grinding Machine
- Electric Hacksaw (Serm Layon)

## 25. STORES

Equipped with stores to keep main tools, welding tools, consumables, paints, electrical equipment, rigging equipment, Barge equipment spares.

## 26. WELDING SYSTEM

- VERMAAT Dual Torch Auto Weld System 08 Units
- Miller SRH 444 (400 Amps Electric) 9- 20 Nos.
- Miller Dimension 456 Inverters 10 Nos.
- Miller Big Blue 600 DX Diesel Engine driven multi-process Welding Generator 01 No.

## 27. COMMUNICATIONS

- Norstar 16 Points Intercom System.
- 6 Horn Speaker & 6 Box Central Public Addressing System.

### **In Bridge**

- Sailor RT2048 Marine VHF, 25/1 Watt 1 Unit

### **In Radio Room**

- Inmarsat B , SATCOM System 1 Unit  
Make : Furno Model : FELCOM 81  
Equipped with Telephone, Fax, Voice and Data Transfer Mode
- Sailor Radio Telex System, c/w Message Terminal H2098, Compact HF SSB RM 2151, N2161, T2130, RE2100 1 Unit



- Philips Message Terminal H-1253 B with key board 1 Unit
- SSB Trans receiver ICOM - M700TY 1 Unit
- INMARSAT Mini 'M' SATCOM System, 1 Unit  
Make : THRANE & THRANE  
(Equipped with Telephone, Fax & E-Mail Facilities)
- Sailor RT 144 C Marine VHF 1 Unit
- DX Radio System's 835 Series AERO/VHF 1 Unit
- Hand held VHF Radios 4-6 Units.
- Portable Helicopter Radio with Headset 1 Unit.
- NT 900 Navetex Receiver 1 Unit
- JOTRON 40S EPIRB 1 Unit

## 29. FIRE FIGHTING EQUIPMENTS / FACILITIES

### - **Fire Pumps**

- 1 No. Diesel Driven Fire Water Pump 50 Cu. M/Hr. @ 70 M head.
- 2 Nos. Electric Driven Fire Water Pump

### - **Fire Fighting System Extinguishers**

- 1 Set Halon Fire Fighting System with 15 Cylinders of 45 Kg. each
- 1 Set Helideck Foam Fire Fighting System
- 1 No. CO<sub>2</sub> Fighting System ( 1 Cylinder 45Kg.)
- Fire Extinguishers : -
  - 30 Nos. Carbon Di-oxide (CO<sub>2</sub>) Extinguishers
  - 2 Nos. Halon Extinguishers
  - 21 Nos. Water Extinguishers
  - 21 Nos. Dry Powder Extinguishers
  - 3 Nos. Foam Extinguishers

## 30. HEAT AND SMOKE DETECTION



Heat and smoke sensors installed with audible & visual alarms in all quarters, galley, stores & deck.

**31. H<sub>2</sub>S AND LEL GAS DETECTION**

H<sub>2</sub>S and LEL gas detectors installed in main deck with audible & visual alarms in accommodation & Radio Room (Only installed when needed for a project).

**32. LIFE SAVING APPLIANCES**

- **Life Rafts / Life Jackets**
  - As required by Flag / Class Society.
- **Life Buoys & MOB**
  - As required by Flag / Class Society.
- **Pyrotechnics**
  - As required by Flag / Class Society
- **Rescue Boat**
  - 'ZODIAC' Inflatable Speed Boat  
Model MK II, 6 persons capacity



Rev. : 08

Date : 19.12.06

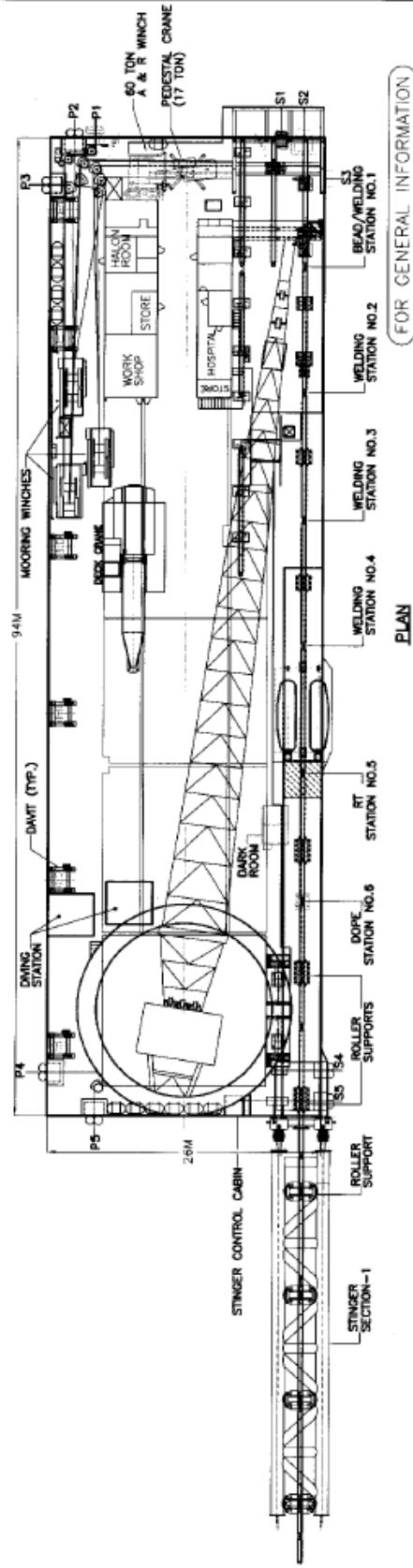
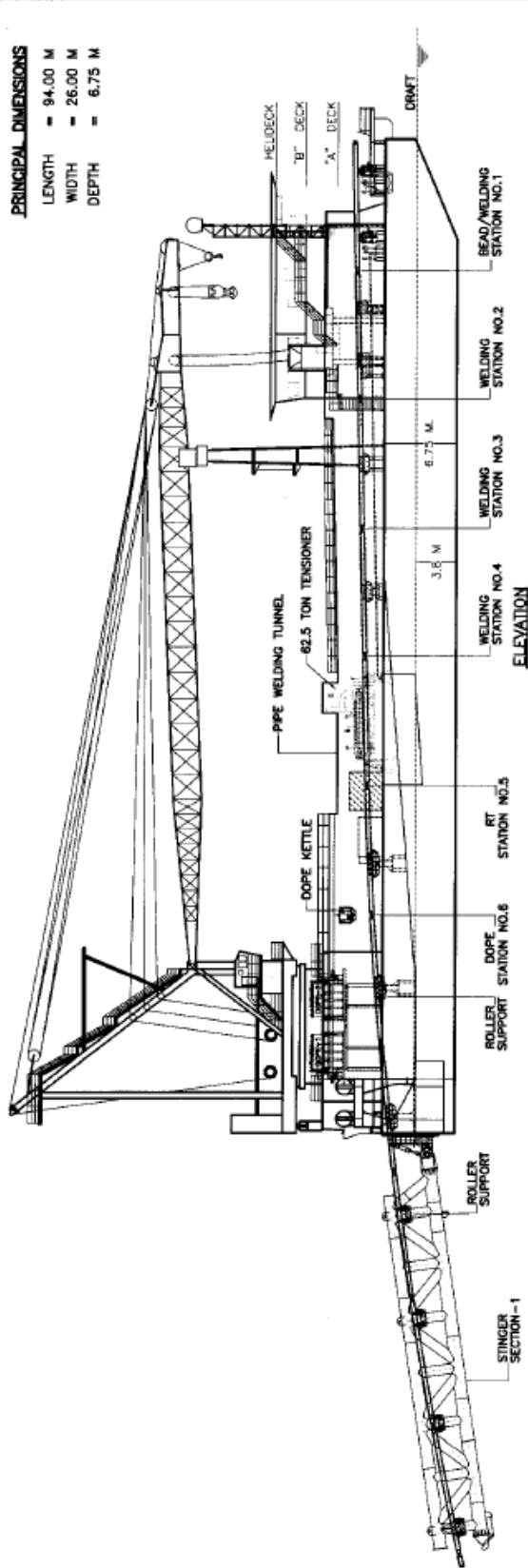
***SPECIFICATIONS ARE SUBJECT TO CHANGE WITHOUT PRIOR NOTICE OR LIABILITY***

X:\Regina250\Specification\R250 Specification rev.08.doc



**PRINCIPAL DIMENSIONS**

LENGTH = 94.00 M  
 WIDTH = 26.00 M  
 DEPTH = 6.75 M



FOR GENERAL INFORMATION

CLIENT:		INTERNAL	
REV. DATE		DESCRIPTION	
00	07/09/03	ISSUED FOR INFORMATION	EXC SBM AKJ
			BY CHX/APP'D
SCALE: 1:400		SIZE: A3	DRAWN: EXC (CHECKED: SRU)
JOB No.		DRAWING NO. R250-BRG-CA-009	
JOB No.		REV. TITLE: DERRICK LAY BARGE REGINA-250 GENERAL ARRANGEMENT	
JOB No.		REV. 00	

**NOTE**  
 1. DECK CRANE, PEDESTAL CRANE, DIVING STATION ETC. ARE NOT SHOWN IN THE ELEVATION FOR CLARITY.

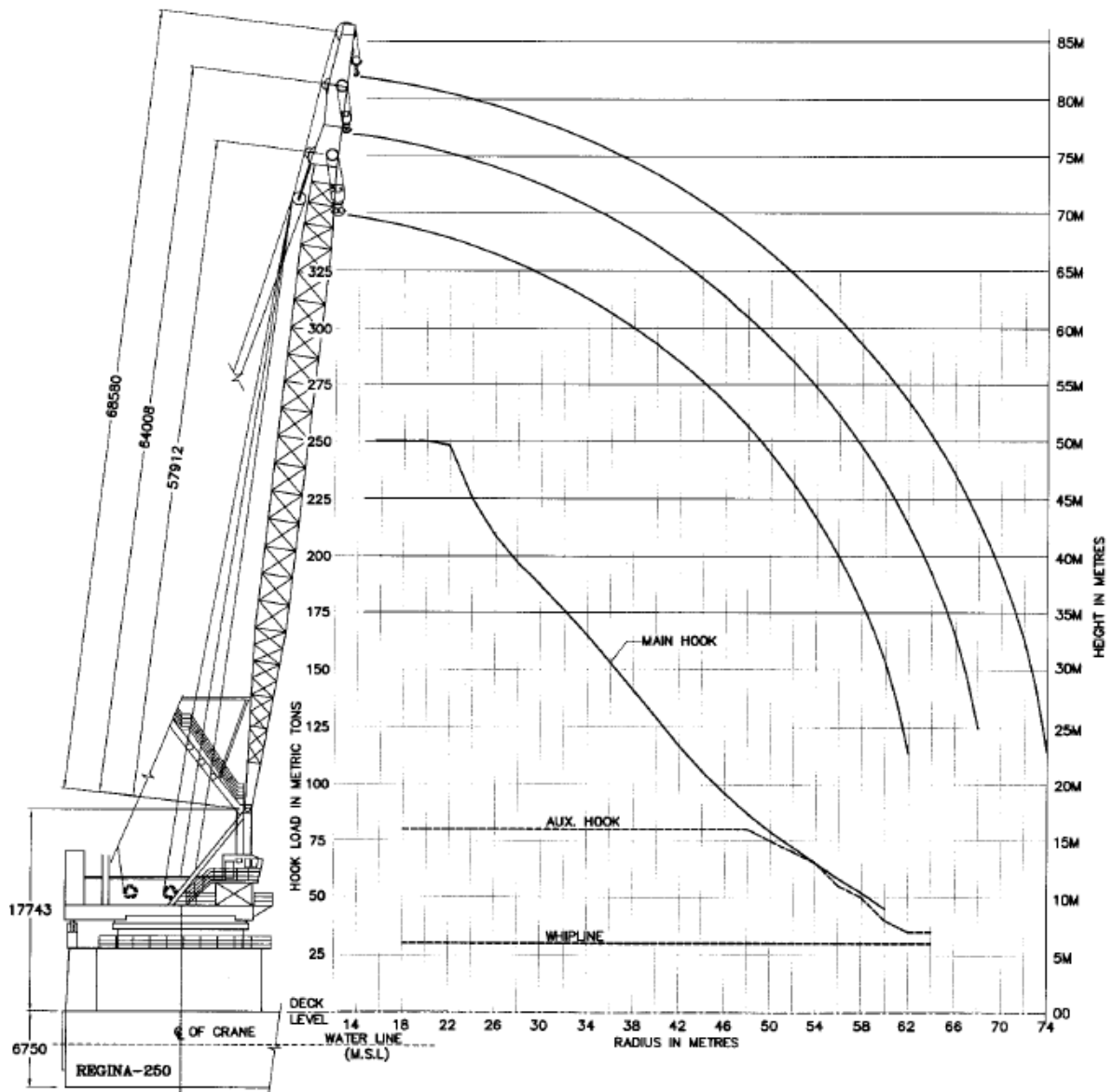
D:\DWG\10250\BRG\000920

Rev. : 08

Date : 19.12.06

**SPECIFICATIONS ARE SUBJECT TO CHANGE WITHOUT PRIOR NOTICE OR LIABILITY**

X:\Regina250\Specification\R250 Specification rev.08.doc



					CLIENT: INTERNAL		D:\DWG\R250\CBRCH00100	
					VALENTINE MARITIME (GULF) L.L.C.		ABU-DHABI, U.A.E.	
022/03/00	ISSUED FOR INFORMATION	EKC	RR	AKJ	JOB No.	DRAWING No.	REV.	TITLE:
DATE	DESCRIPTION	BY	CHK	APP'D		R250-CBR-CH-001	00	DERRICK LAY BARGE REGINA-250 CRANE LOAD CHARTS & HOOK ELEVATION Vs RADIUS
SCALE: AS SHOWN   SIZE: A3   DRAWN: EKC   CHECKED: RR								

Rev.: 08

Date: 19.12.06

**SPECIFICATIONS ARE SUBJECT TO CHANGE WITHOUT PRIOR NOTICE OR LIABILITY**

X:\Regina250\Specification\R250 Specification rev.08.doc