



## **JACK-UP DERRICK BARGE JU-251**

1. **NAME OF VESSEL** : JU-251
2. **OWNERS** : Valentine Maritime (Gulf) L.L.C.
3. **YEAR BUILT** : 1969, Rebuilt 1995
4. **BUILDERS** : Boele's Scheeps Werven En Machine Fabriek  
NV (Holland)
5. **FLAG** : U.A.E.
6. **PORT OF REGISTRY** : Abu Dhabi
7. **GRT** : 2243
8. **NRT** : 672
9. **HULL**
  - a. Type of Vessel : Self Elevating Platform
  - b. Classification : Bureau Veritas I 3/3 E, NP Deep Sea
  - c. Dimensions : Length 60.96 meters (200 feet)  
Breadth 21.34 meters (70 feet)  
Depth 3.96 meters (13 feet)  
Draft 2.80 meters (8 feet)
  - d. Fenders : Heavy duty rubber tyre fenders at regular intervals.
  - e. Mooring / Towing Fittings : Equipped with necessary bollards bits, Fair leads, main tow bridle .
10. **DERRICK CRANE**

Fully revolving, pedestal mounted American Hoist Crane, Model : AH 407

  - a. **Capacities :**

Main Hook	:	168.00 MT @ 18.3 Metres Radius. (with Double Tackle) 181.80 MT @ 18.3 Metres Radius. (with Single Tackle)
Auxiliary Hook	:	22.70 MT @ all Radius
  - b. **Boom Length :**

Main Hook	:	45.73 metres (150 feet)
-----------	---	-------------------------

***SPECIFICATIONS ARE SUBJECT TO CHANGE WITHOUT PRIOR NOTICE OR LIABILITY***



Auxiliary Hook : 48.78 metres (160 feet)

c. Auxiliary Equipment : 2 No. 5 MT Air Tugger

d. CRANE LIFTING CAPACITIES

Radius		Main Hook		Aux. Hook	
FT	MTR	Cap. in MT	Height in Meters	Cap. in MT	Height in Meters
60	18.29	168.00	41.52	22.7	49.52
65	19.81	168.00	41.09	22.7	49.09
70	21.34	168.00	40.58	22.7	48.57
75	22.86	155.62	40.05	22.7	48.05
80	24.38	144.39	39.48	22.7	47.48
85	25.91	134.01	38.82	22.7	46.80
90	27.43	124.69	38.08	22.7	46.00
95	28.96	116.74	37.31	22.7	45.21
100	30.48	110.08	36.55	22.7	44.42
105	32.00	103.79	35.77	22.7	43.55
110	33.53	97.66	34.76	22.7	42.62
115	35.05	91.65	33.74	22.7	41.58
120	36.58	85.72	32.66	22.7	40.46
125	38.10	80.05	31.47	22.7	39.27
130	39.62	74.66	30.19	22.7	37.97
135	41.15	69.92	28.86	22.7	36.60
140	42.67	66.02	27.38	22.7	35.13
145	44.20	62.38	25.78	22.7	33.55
150	45.72	61.19	25.22	22.7	32.98

11. LEGS & JACKING SYSTEM

**Legs**

- 8 No Legs. Each 71" OD x 55 meter long.

**Location**

- 4 Nos. at BOW (2 No. each at PORT & STBD side)
- 4 Nos. at STERN (2 No. each at PORT & STBD side)

**Jacks**

- 8 Nos. Delong Jacks, one on each leg.
- Each Jack consists of :-
  - 10 Nos. 18" Dia Single Acting Pneumatic cylinders.
  - 2 Nos. 18" Dia Double Acting Lifting / Retracting cylinders.
  - 12 No. Inflatable Gripper Tubes with Slugs.
- Operating Pressure - 24.70 Kg / cm<sup>2</sup>.

**SPECIFICATIONS ARE SUBJECT TO CHANGE WITHOUT PRIOR NOTICE OR LIABILITY**



- Jacking Speed - 4.50meter / hour.

## 12. MOORING SYSTEM

- 4 point mooring system.
- 4 Nos. self adjusting fair leads with 4 Nos. 5 MT each Collins Anchors.
- 2 Nos. Double Drum SKAGIT Winches RB 90 W driven by Detroit Diesel V-6 Engine with 2800' x 1 3/8" diameter wire rope on each drum.
- All Mooring Winches are controlled from winch control room.

## 13. SERVICE TANKS

- 3 Nos. Fresh water tanks with Total capacity : 450 Cu. M.  
(Inclusive of Fresh Water Ballast tank of 180 Cu. M for Jacking system)
- 2 Nos. Fuel tanks with Total capacity : 70 Cu. M.
- 1 No. Sea Water Surge Tank with Total capacity : 90 Cu. M.

## 14. ACCOMMODATION

The Barge is equipped with air conditioned quarters for 150 personnel with galley, recreation rooms, hospital and offices. The available cabins are as follows :-

- Single - Berth Cabin : 2 Nos.
- Twin - Berth Cabin : 12 Nos.
- Four - Berth Cabin : 28 Nos.
- Six - Berth Cabin : 2 Nos.

## 15. HOSPITAL

Located at Main Deck. Hospital is equipped with Medical Equipment, Accommodation for Medic & Bed for the observation of the patients.

## 16. HELI DECK

Helideck located at the stern of the Barge. Size of Helideck is 15.10 m x 15.30 m.

**SPECIFICATIONS ARE SUBJECT TO CHANGE WITHOUT PRIOR NOTICE OR LIABILITY**



## 17. VENTILATION & AIR CONDITIONING SYSTEM

- Air conditioning is provided by 4 Nos. York A/c Compressors with air handlers throughout Accommodation and Offices.

	Outdoor Conditions		Indoor Conditions	
	Temp.	Relative Humidity	Temp.	Relative Humidity
Summer	45° C	60%	26° C	50%
Winter	10° C	100%	20° C	50%

## 18. BARGE POWER

- 3 Nos. Caterpillar SR4 Generator powered by CAT D3412 Engine  
(Capacity 400 KW 50 Hz each)

## 19. SEWAGE TREATMENT PLANT

- 1 No. Exceltec Omnipure Sewage Treatment Plant, Model 12 MX

## 20. AIR COMPRESSORS

- 3 Nos. Fives Cail Electric Driven Compressor Model HD005 920 CFM @ 360 psi.

## 21. MAIN WORKING DECK

The working area of deck is partially covered with single layer heavy duty timber allowing deck loading in excess of 2.6 MT/ Sq. M. Clear deck area available is 500 Sq. M.

## 22. WORKSHOP

Equipped with following major equipment:

- Lathe (CELTIE)
- Pedestal Drilling Machine (ADAM)
- Grinding Machine (PEUGEOT)
- Electric Hacksaw (SERM)

## 23. STORES

Equipped with stores to keep main tools, welding tools, consumables, paints, electrical equipment, rigging equipment and Barge equipment spares.

**SPECIFICATIONS ARE SUBJECT TO CHANGE WITHOUT PRIOR NOTICE OR LIABILITY**



#### 24. WELDING MACHINES

- 2 Nos. Miller SRH 444 (400 Amps Electric) 2 Nos.

#### 25. COMMUNICATIONS

- THRANE & THRANE Mini 'M' Satellite System equipped with Fax and Voice Mode 1 Unit
- Sailor radio Telex System c/w Message Terminal H2098, Receiver RM 2100, Transmitter T2131 1 Unit
- Sailor RT 144 C Marine VHF 25/1 Watt 1 Unit
- Sailor RT 2048 Marine VHF 2 Units
- Hand Held VHF Radios 4 Units
- Unit NT 900 Navtex Receiver 1 Unit
- Unit Sperry SR120 Gyrocompass 1 Unit
- Norstar 16 Points Intercom System 1 Unit
- Horn Speakers & 5 Box Central Public Addressing System 1 Unit
- KANNAD 406 EPIRB 1 Unit

#### 26. FIRE FIGHTING EQUIPMENT / FACILITIES

##### - Fire Pumps

- 1 No. Diesel Driven Fire Water Pump
- 2 Nos. Electric Driven Fire Water Pump

##### - Fire Fighting

- 1 No. CO<sub>2</sub> Fire Fighting System (10 Cylinders of 45Kg. each)
- Fire Extinguishers : -  
17 Nos. Carbon Di-oxide (CO<sub>2</sub>) Extinguishers  
41 Nos. Dry Powder Extinguishers  
3 Nos. Foam Extinguishers

#### 27. HEAT AND SMOKE DETECTION

Heat and smoke sensors installed with audible & visual alarms in all quarters, galley, stores & deck.

#### 28. H<sub>2</sub>S AND LEL SENSORS

H<sub>2</sub>S and LEL Sensors installed in main deck with audible & visual alarms in accommodation & Radio room (only installed when needed for project).

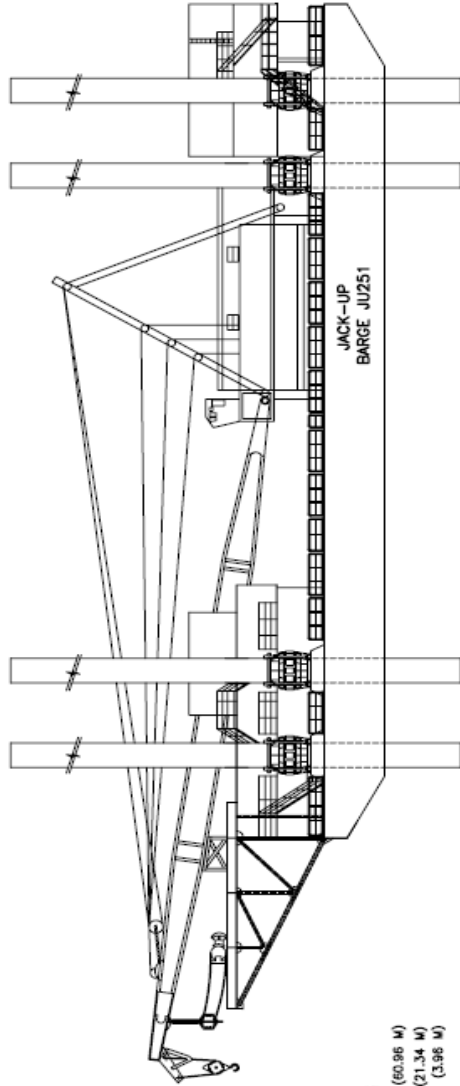
**SPECIFICATIONS ARE SUBJECT TO CHANGE WITHOUT PRIOR NOTICE OR LIABILITY**



## 29. LIFE SAVING APPLIANCES

- **Life Rafts / Life Jackets**
  - As required by Flag / Class Society.
  
- **Life Buoys & MOB**
  - As required by Flag / Class Society.
  
- **Pyrotechnics**
  - As required by Flag / Class Society
  
- **Rescue Boat**
  - 'ZODIAC' Inflatable Speed Boat  
Model MK II, 6 persons capacity

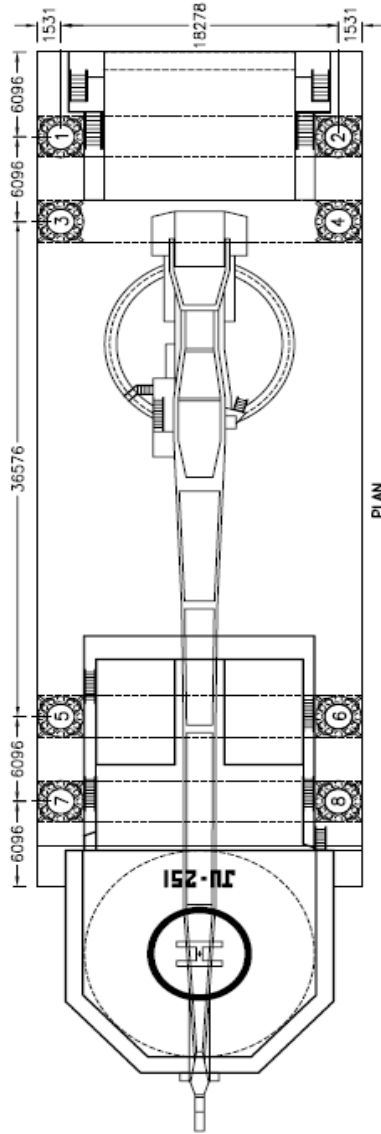
***SPECIFICATIONS ARE SUBJECT TO CHANGE WITHOUT PRIOR NOTICE OR LIABILITY***



**PRINCIPAL DIMENSIONS**

LENGTH = 200 FT. (60.96 M)  
 WIDTH = 70 FT. (21.34 M)  
 DEPTH = 13 FT. (3.96 M)  
 LEG DIA. = 71"  
 LEG LENGTH = 55 M.

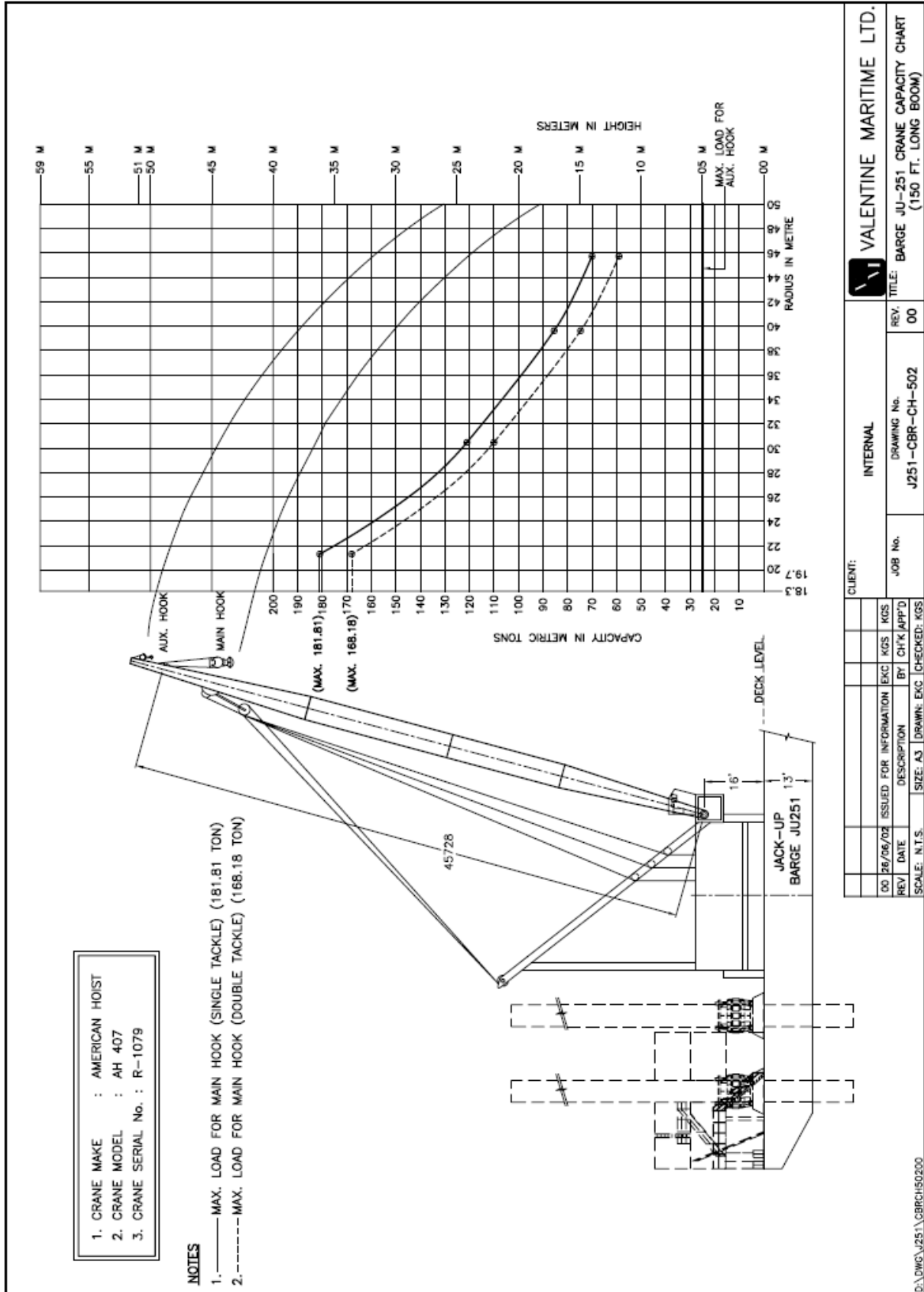
**ELEVATION**



**PLAN**

CLIENT:		INTERNAL		VALENTINE MARITIME (GULF) L.L.C. ABU-DHABI, U.A.E.	
00	03/02/03	ISSUED FOR INFORMATION:	KCS	KCS	KCS
REV	DATE	DESCRIPTION	BY	CHK/APPD	
SCALE: 1:400		SIZE: A4	DRAWN: KCS	EXC-CHECKED: KCS	
JOB No.		DRAWING No.		REV.	
6096		J251-BRG-CA-006		JACK-UP BARGE JU-251	
				GENERAL ARRANGEMENT	
				00	

D:\DWG\JU251\BRGGA00600



CLIENT: INTERNAL		DRAWING No. J251-CBR-CH-502	
JOB No.		REV. TITLE: BARGE JU-251 CRANE CAPACITY CHART (150 FT. LONG BOOM)	
00	26/06/02	ISSUED FOR INFORMATION	EKC KGS
REV	DATE	DESCRIPTION	BY CHK/APP'D
SCALE: N.T.S.		SIZE: A3	DRAWN: EKC (CHECKED: KGS)

VALENTINE MARITIME LTD.  
 D:\DWG\J251\CBRCH50200

SPECIFICATIONS ARE SUBJECT TO CHANGE WITHOUT PRIOR NOTICE OR LIABILITY